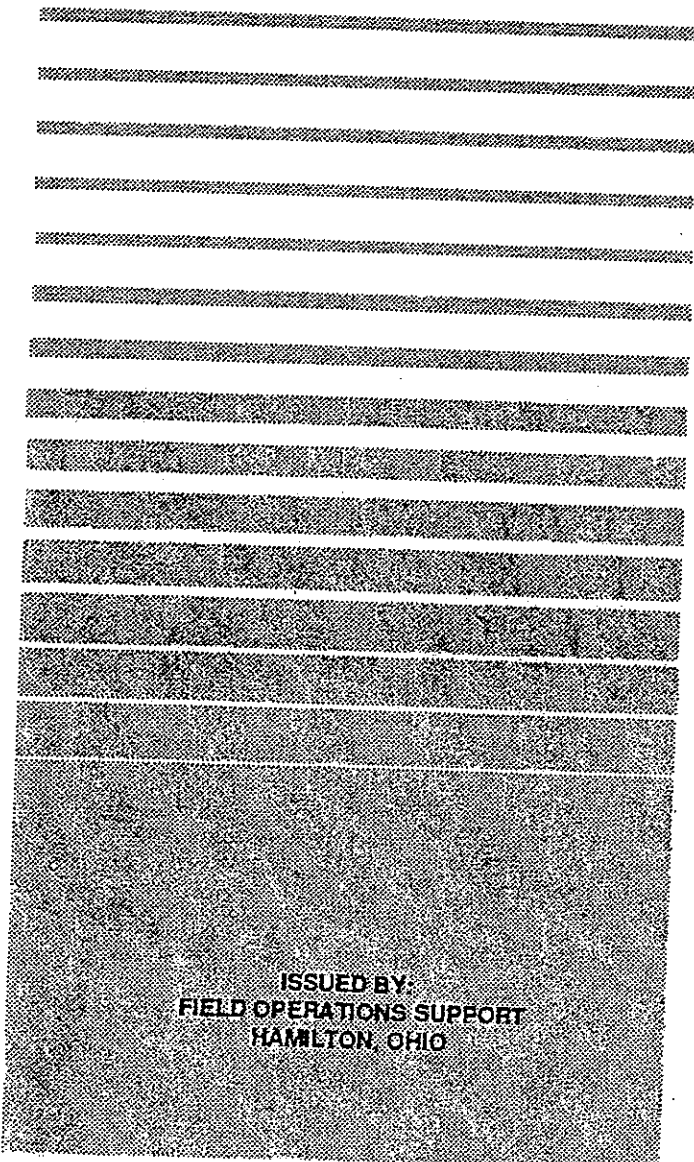


Mosler

\$70.00

Parts Catalog . . .

CF-400 ***Currency Sorter***



ISSUED BY:
FIELD OPERATIONS SUPPORT
HAMILTON, OHIO

890017

VOLUME 301 - "CF-400 Fitness Sorter"

© - 1989 - MOSLER INC.

NS-10870 P

EXH. H0001

TABLE OF CONTENTS

	<u>PAGE</u>
CF400 PROCESSING UNIT _____	1
UPPER TRANSPORT	
TRANSFER	
MECHANICAL (DWG 4364135370 1 OF 3) _____	2
MECHANICAL (DWG 4364135370 2 OF 3) _____	4
DRIVE (DWG 4364135370 3 OF 3) _____	5
TRANSPORT _____	6
BELTS/ROLLERS (DWG 4364135380 1 OF 2) _____	10
ROLLERS (DWG 4364135380 2 OF 2) _____	12
	13
LOWER TRANSPORT	
TRANSFER	
DRIVE (DWG 4364135390 1 OF 2) _____	21
MECHANICAL (DWG 4364135390 2 OF 2) _____	23
TRANSPORT _____	24
BELTS/ROLLERS (DWG 4364135400 1 OF 3) _____	28
ROLLERS (DWG 4364135400 2 OF 3) _____	30
MECHANICAL (DWG 4364135400 3 OF 3) _____	31
	32
DETECTOR UNIT _____	35
MAIN PROCESSOR P.C. BOARDS _____	37
OPERATOR KEYBOARD _____	38
EPROMS/ROM LIST _____	39
PRINTERS _____	41
BEARINGS _____	42
MISCELLANEOUS _____	43

ABBREVIATIONS USED IN PARTS LISTS

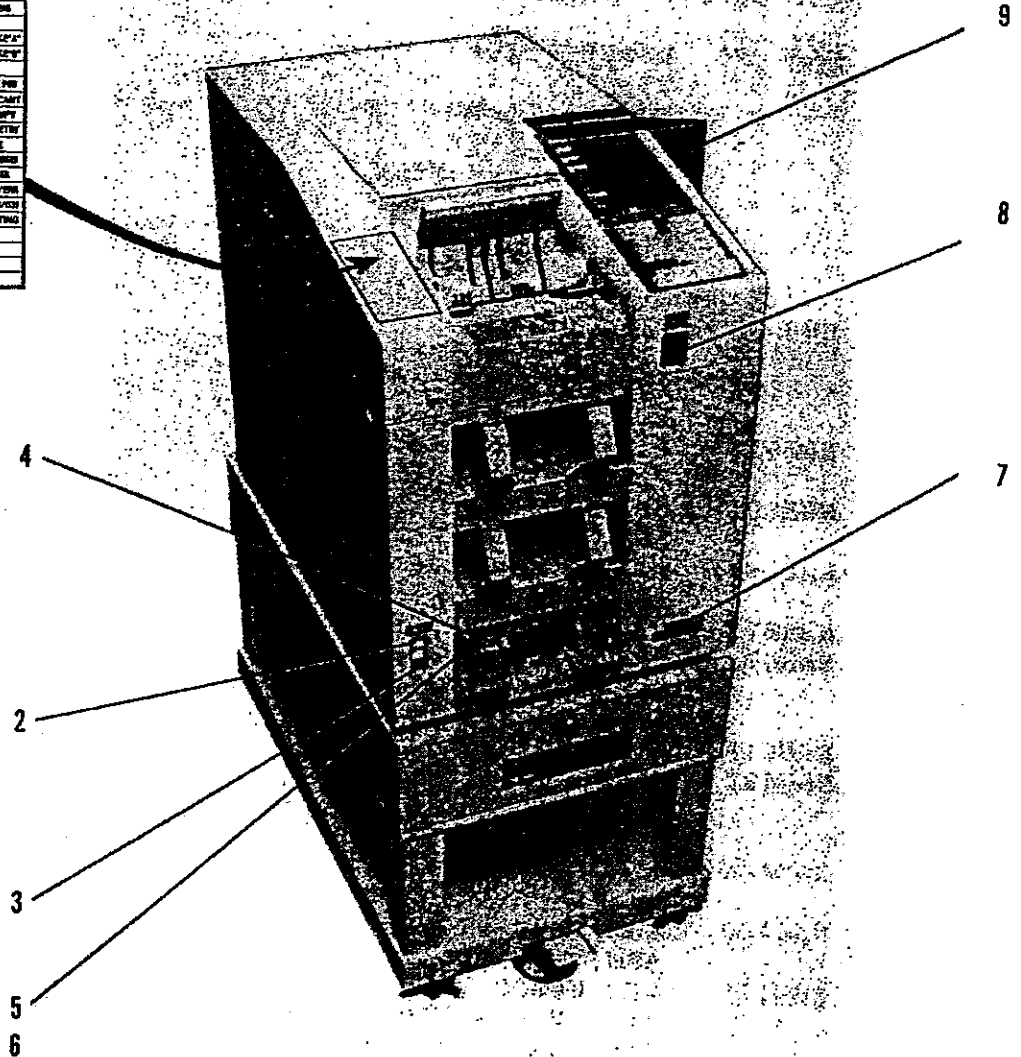
BID - SCREW
BLT - BELT
BRG - BEARING
BRKT - BRACKET
BUSH - BUSHING
CLR - COLLAR
CVR - COVER
ERR - C-CLIP
FLT - SCREW-FLAT HEAD
GHB - GEAR BOX
HLD - HOLDER
HNDL - HANDLE
INS - INSULATOR
LCK - LOCK
LVR - LEVER
PLT - PLATE
PLY - PULLEY
RLR - ROLLER
SET - SET SCREW
SFT - SHAFT
SP - SPRING-LEAF
SPC - SPRING-PUSH
SPE - SPRING-PULL
STY - SLIDE-RAIL
WAS - WASHER
ZPAN - SCREW W/WASHERS

NOTE: A BLANK SPACE IN THE PART NUMBER COLUMN INDICATES THAT NO NATIONAL SERVICE REPLACEMENT PART NUMBER HAS BEEN ASSIGNED.

CF-400 PROCESSING UNIT

1

CODE#	CONTENTS
010	NO ASSIGNED DENOMLS
011	DENOMLS CHANGED/START
012	MODE CHANGED/START
020	PRINTING FROM STACK
021	STACKING FULL
022	NOTES REMOVED BY IMMEDIATE
023	NOTES REMOVED BY IMMEDIATE
024	UNMATCH
027	8 TOTAL EXCHNG BLANKS
028	START IMMEDIY ENTER DENOM
033	START AFTER KEY VERIFY
034	RETRY AFTER 8X VERIFY
035	RETRY REAPPROPRIATE
036	DOUBLE VERIFY PREFERRED
037	VERIFY WITHOUT PRINT DIAL
038	2 MAX VERIFY AFTER VERIFY
040	START/RESTART AFTER DENOM
040	RESET-VER DURING PRINTING
300'S	DETECTION UNIT
300'S	JAMMING NOTES
300'S	PRINTING
300'S	CONTROLLER



ITEM #	PART NO.	DESCRIPTION	TOSHIBA#	QTY
1	N91164	LABEL, OP-CODE-CF	4363614201	1
2	N65449	SWITCH, POWER	4843230008	1
3	N65443	FUSE, 8A SLO-BLO	4843500505	1
4	N88866	COVER, REJECT	4363768470	1
5	N88889	SPRING, REJ	4363697890	1
6	N88915	SCREW, 4-N33687*-REJ	4363557250	2
7	N79928	PLATE, MOSLER 11/16X 2 7/16		1
8	N65440	SWITCH, DIAL	4363604690	1
9	N89834	HOOD, S-OP-PANEL	4363819600	1

UPPER TRANSPORT

DRWG. #4364135370 UPPER TRANSPORT-TRANSFER

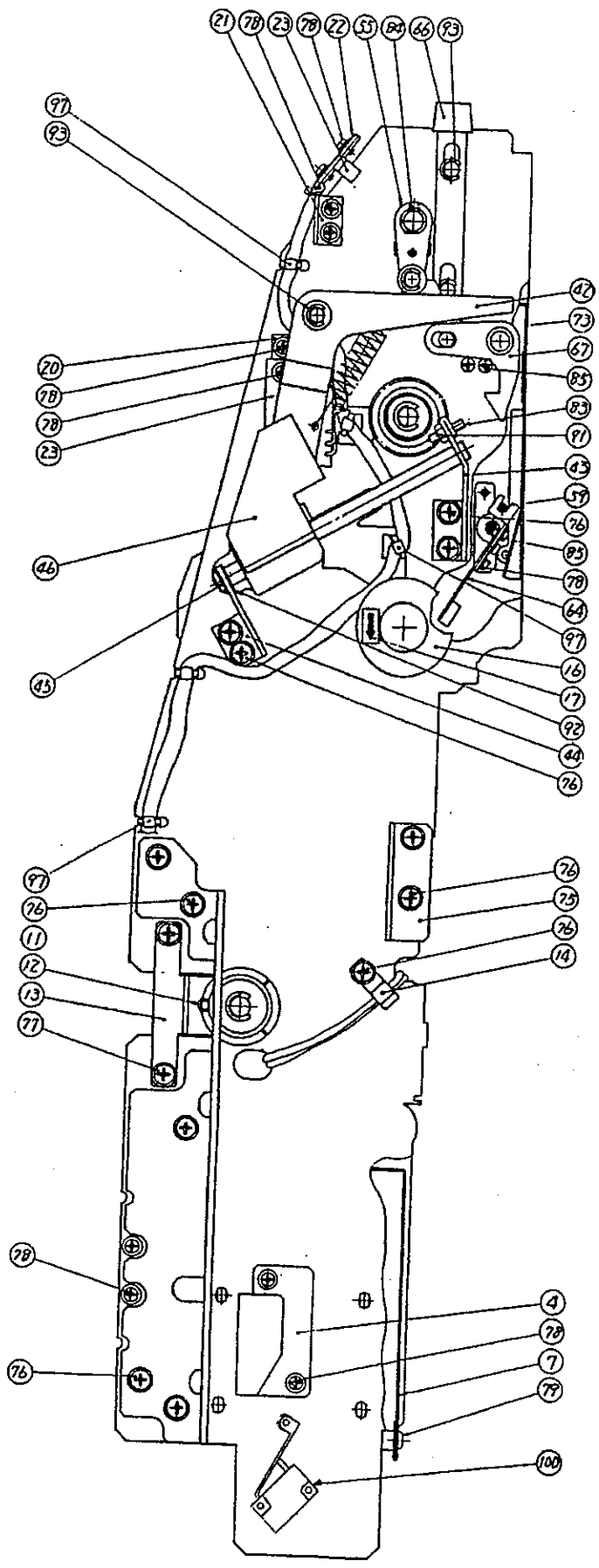
ITEM #	PART NO.	DESCRIPTION	TOSHIBA #	QTY
1		PLT, RAIL-UL	4364134980	1
2		PLT, RAIL-UR	4364134990	1
3		ASM, UP-TRG-MECH	4364135380	1
4		BRKT, PUSHER	4364133160	1
5		HLD, WRG-D	4364133540	1
6		BRKT, SWITCH-T	4364133180	1
7		CVR, MTR	4363768490	1
8	N88852	BLT, 5M7-N60576*	4363697790	1
9	N88897	PLY, V-M-N33360*	4363602201	1
10	N88896	PLY, V-A-N33359*	4363602191	1
11		PIN, ***-N33454*	4363557121	1
12	N88912	PIN, STP-N33460*	4363557180	2
13		PLT, MIG-N34976*	4363559811	2
14	N88891	SP-CAM-T-WR	4363648071	3
15		ASM, TRS-T-SENS	4364134460	1
16	N88867	HNDL, TR-N33364*	4363602240	1
17		LABEL, KNOB	4363600150	1
18	N88872	GEAR, C*-N33580*	4363558191	1
19	N88873	BRG-F688ZZ	4407606510	2
20		HLD, S-A-N33593*	4363558253	1
21		BS-S-CR-N33619*	4363558425	1
22	N88918	INS, GP4-N34016*	4363558610	2
23	N65432	PWA-S-GP4-1 (SC02E03)	4363604430	2
24		PLT, SWS-N34109*	4363559390	1
25		FORM, 2 X 2.5 X .41	4363637390	1
26	N65444	ASM, WRG-SENS-L	4364130440	1
27		K, HLD-S-N33563*	4363557961	1
28	N65440	ASM, WRG-DIG-SW	4364134750	1
29		ASM, WRG-SR3	4364130530	1
30	N88136	BRG-608ZZ	2610000890	2
31		PLY, V-B-N33490*	4363557441	1
32		CLR, D9*-N33628*	4363558460	2
33		SFT, CLH-N33531*	4363557821	1
34	N88908	KEY-25*25*010DN	4842902652	1
35	N65465	ASM, CLT-EXT	4363604630	1
36	PG. 7	ASM, TR2-N16311*	4363613210	1
37	N88853	BLT, TMG-N34094*	4363602750	1
38	N88850	BLT, 3M3-N34091*	4363602720	1
39	N88898	K, PLY-T-N16436*	4363636270	1
40	PG. 7	ASM, TRV-N16333*	4363613400	1
41		CLR-040*010SF	4350123870	2
42	PG. 9	ASM, ARM	4364134480	1
43		HLD, SLA-N33521*	4363557743	1
44		HLD, SLB-N33522*	4363557751	1
45		SFT, SLD-N33520*	4363557730	1
46	PG. 8	ASM, SLD-N16332*	4363636351	1
47	N88876	BRG-L-1260ZZ	4842110024	1
48	N88882	BUSH, D8-N31930*	4363602161	4
49		ASM, SBU-N16219*	4363613290	1

UPPER TRANSPORT

50		K, GUIDE-SUPPLY	4364135090	1
51		GUIDE, SIDE-L	4364133070	1
52		GUIDE, SIDE-R	4364133080	1
53		CUSHION, TOP-A	4364133240	1
54	PG. 9	ASM, BU*-N18289*	4363767140	1
55		ASM; LVM-N16323*	4363613310	1
56		ASM, SENSER-3-1	4364134780	1
57		ASM, SENSER-R-1	4364134870	1
58		HLD, WIPER	4364133120	1
59		SFT, WIPER-GUIDE	4364133510	1
60		SFT, WIPER	4364133780	1
61		K, DTH-WIPER, TOP	4364134040	1
62		SPC-075-060-290	4363260940	1
63		BRKT-WIPER	4364133520	1
64		S, WIPER-ARM	4364134450	2
65	N88887	SPE-100-080-317	4363271610	1
66		ASM, LSP-N10922*	4363613570	1
67		K, LOCK-ARM-L	4363603411	1
68		K, LOCK-ARM-R	4363603421	1
69		JIG-B, LOCK	4364133660	1
70		CLR-080*0180F	4350121760	2
71		CLR-080*0130F	4350121710	2
72		CLR-080*0100F	4350121680	1
73		K, BOTTOM-PLT	4364133910	1
74		ASM, CAH-R-MGN	4364131410	1
75		BRKT, KOTES	4364133320	1
76	N90482	ZPAN40*08MSZN3A	7640400851	16
77		ZPAN40*06MSZN3A	7640400651	4
78	N51172	ZPAN30*06MSZN3A	7640300651	31
79	N51148	RID40*08MSZN3AI	7043400811	2
80	N51147	BID30*06MSZN3AI	7043300611	4
81		TZPAN3006MSZN3L	4842040690	1
82		ZPAN60*10MSZN3A	7640301051	2
83		9H8S40/16MSFB	7494401619	1
84	N51262	9H8S40/04MSFB	7494400419	9
85		ZPAN30*06MSZN3A	7640300641	6
86		FLT, 30*20MSZN3AI	7044302011	3
87		FLT, 30*06MSZN3AI	7044300611	1
88		1MWAS060MSZN3A	7400106011	1
89		1HWAS040MSZN3A	7400104011	4
90		OSWAS040SUZN3A	7401004021	2
91	N51140	6/ONUT40MSZN3A	7400400011	3
92	N51153	ERRO60SKZN3A	7405006031	5
93		ERRO40SKZN3A	7405004031	6
94		PAN40*25MSZN3AI	7040402511	1
95		PAN30*20MSZN3AI	7040302011	2
96		PWZ-LCBS-4N	4843378622	4
97		Z-BD-T18K	4843553501	14
98	N88903	LEVER, BACK-UP	4363602490	1
99		1HWAS030MSZN3A	7400103011	1
100	N65438	SWITCH, V-10FL2-IC2	4363582190	4
NOT SHOWN	N88856	RAII, SLIDE-UPPER	4363637380	2

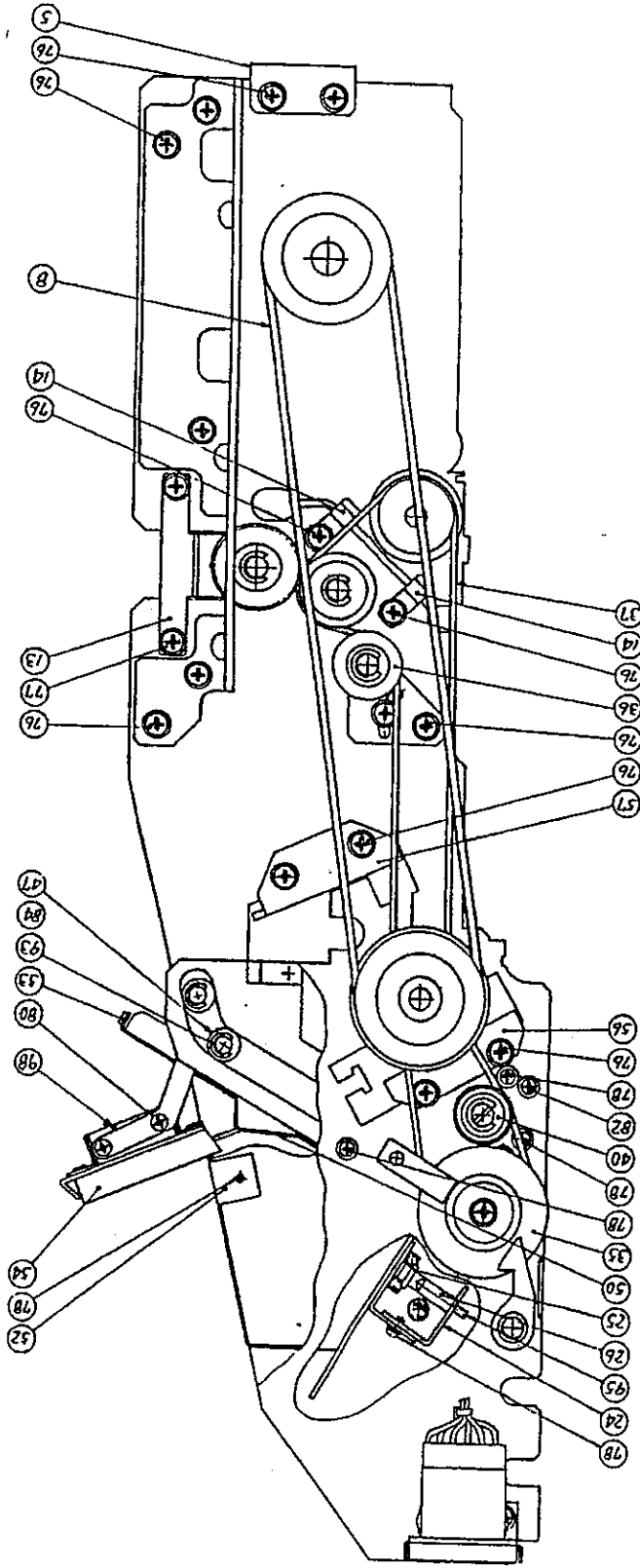


UPPER TRANSPORT



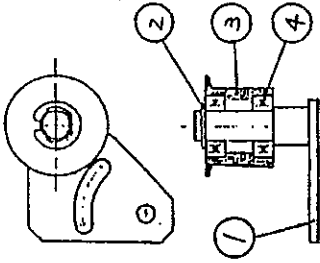
DWG. 4364135370
2 OF 3

UPPER TRANSPORT



DWG. 43641353ZD
3 OF 3
DRIVE

UPPER TRANSPORT

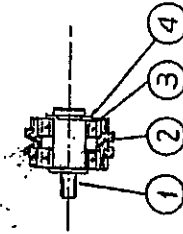


DRWG. #4363613210 ASSEMBLY, TR2-N16311*

ITEM # PART NO. DESCRIPTION

- ASSEMBLY
- 1 N91122 ASSEMBLY
- 2 N51153 K, T-PLT-N16310*
- 3 N88874 ERRO60
- 4 N88874 PLY, T-T-N33488*
- BRG, 68822

TOSHIBA #	QTY
4363613210	1
4363613200	1
7405006031	1
4363557420	1
4842100010	2



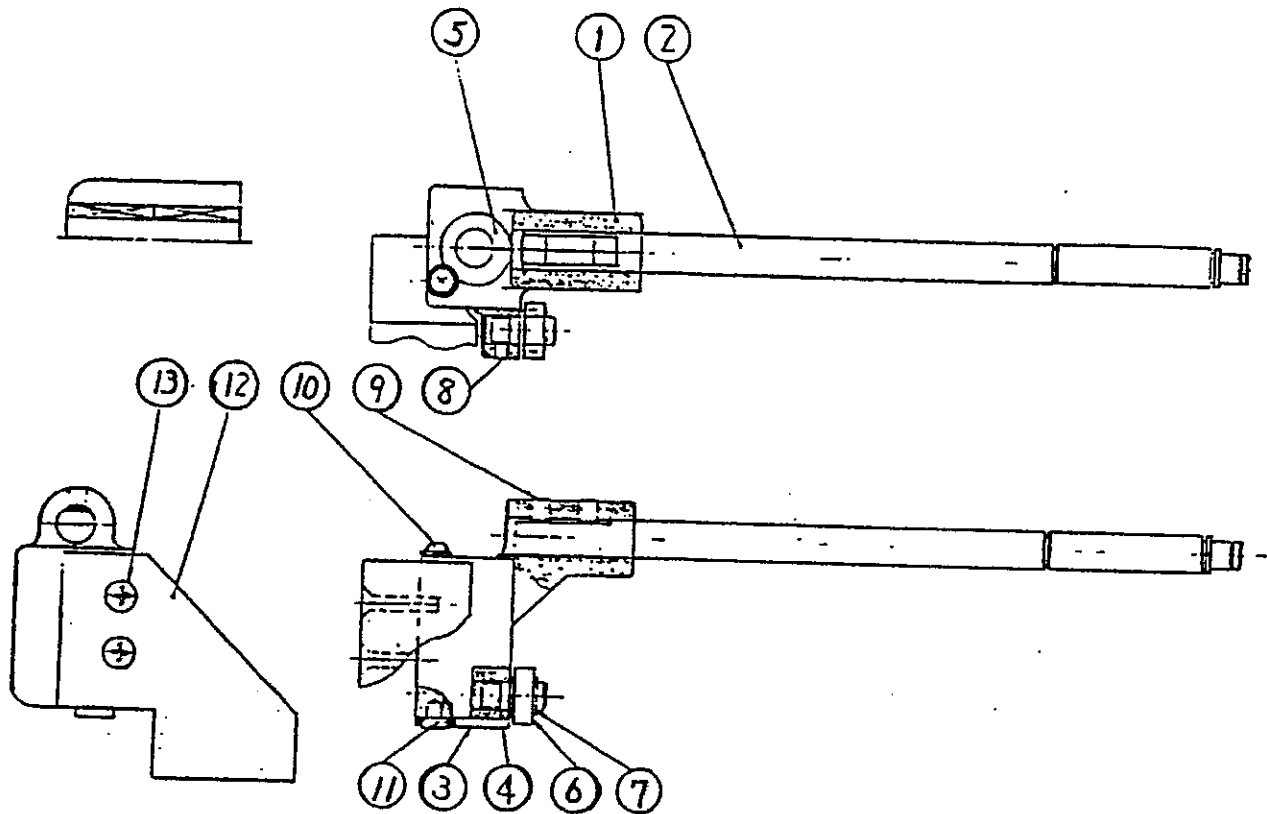
DRWG. #4363613400 ASSEMBLY, TRV-N16333*

ITEM # PART NO. DESCRIPTION

- 1 UC-N33588*
- 2 N33534* PLY, T-V-N33534*
- 3 N88874 BRG-68822
- 4 N51153 ERRO60

TOSHIBA #	QTY
4363558200	1
4363557850	1
4842100010	2
7405006031	1

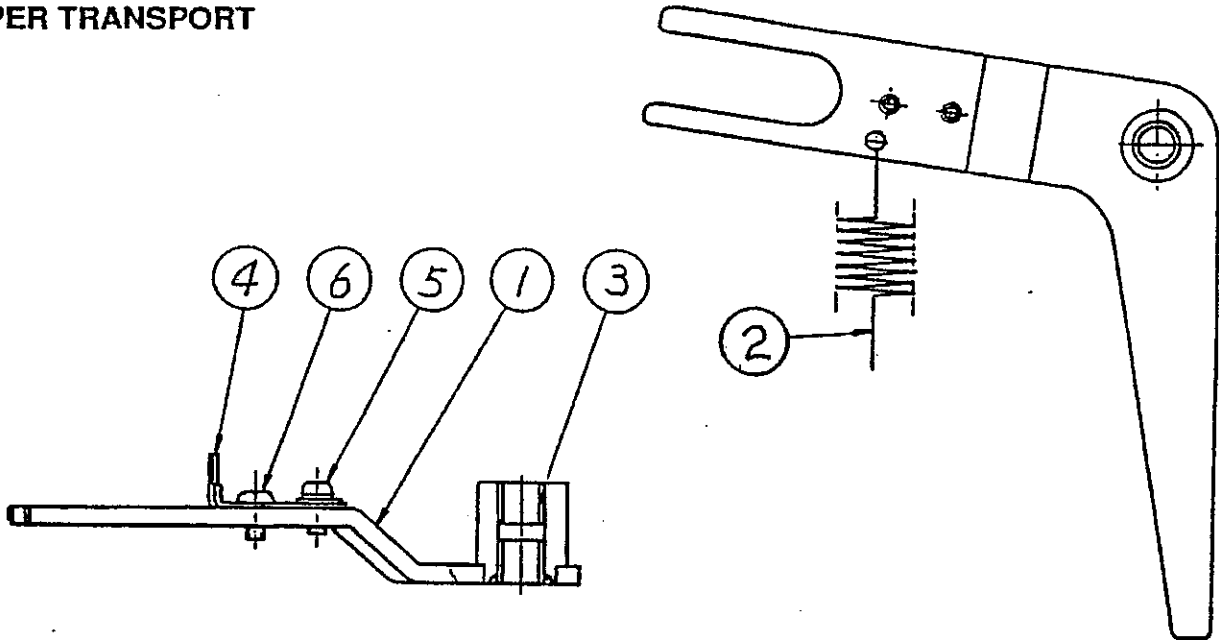
UPPER TRANSPORT



DRWG. #4363636351 ASSEMBLY, SLD-N16332*

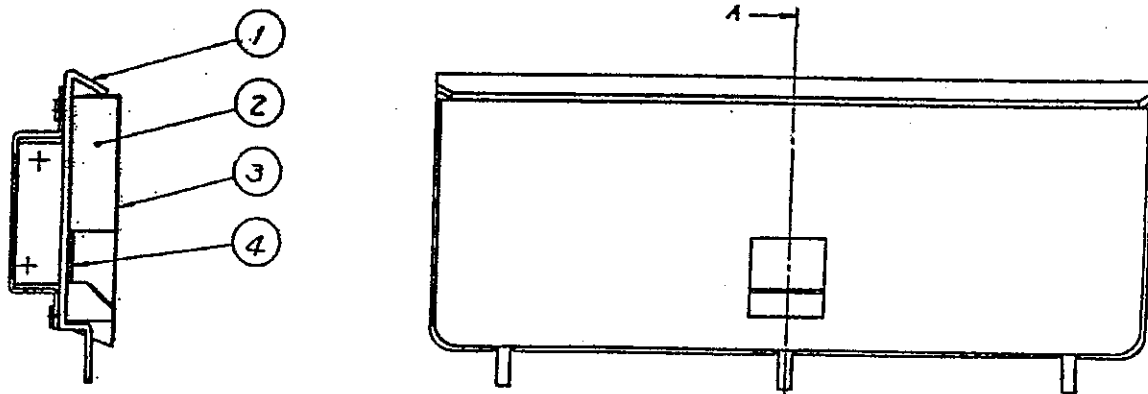
ITEM #	FART NO.	DESCRIPTION	TOSHIBA #	QTY
1		BLK, SLD-N33604*		
2		SFT, BL*-N33526*	4363558323	1
3		PLT, LMT-N33704*	4363557772	1
4		STUD, SL-N33608*	4363559070	1
5	N88147	BRG, LBBANY	4363558311	1
6	N88876	BRG, L-1260ZZ	4842119552	2
7		ERR 040	4842110024	1
8		SCREW, SET-30/03	7405004031	1
9	N51262	SCREW, SET-40/04	7494300319	1
10	N51172	SCREW, ZPAN30/06	7494400419	2
11		SCREW, FLT30/06	7640300651	1
12		WEIGHT, *-N34979*	7044300611	2
13		SCREW, FLT30/16	4363559840	1
			7044301611	2

UPPER TRANSPORT



DRWG. #4364134480 ASSEMBLY, ARM

ITEM #	PART NO.	DESCRIPTION	TOSHIBA #	QTY
1		K, LVR BU-N16316*	4363613260	1
2	N91131	SPE-080-060-393	4363271430	1
3	N88883	BUSH, DU-N34045*	4363637480	2
4		PLT. MSK-N33525*	4363557763	1
5	N51172	ZPAN30*06MSZN3A	7640300651	1
6	N51147	BID30*06MSCRIA1	7043300611	1



DRWG. #4363767140-ASSEMBLY, BACK-UP PLATE

ITEM #	PART NO.	DESCRIPTION	TOSHIBA #	QTY
ASSR.	N88902	BACK-UP PLATE	4363767140	1
1		K, BACK-UP	4364133820	1
2	N90121	CUSHION, BACK-UP	4364133480	1
3	N90122	P-FILM, BACK-UP	4364133490	1
4		RUR, PLT-N33977*	4363559290	1

UPPER TRANSPORT

DRWG. #4364135380 UPPER TRANSPORT-MECH.

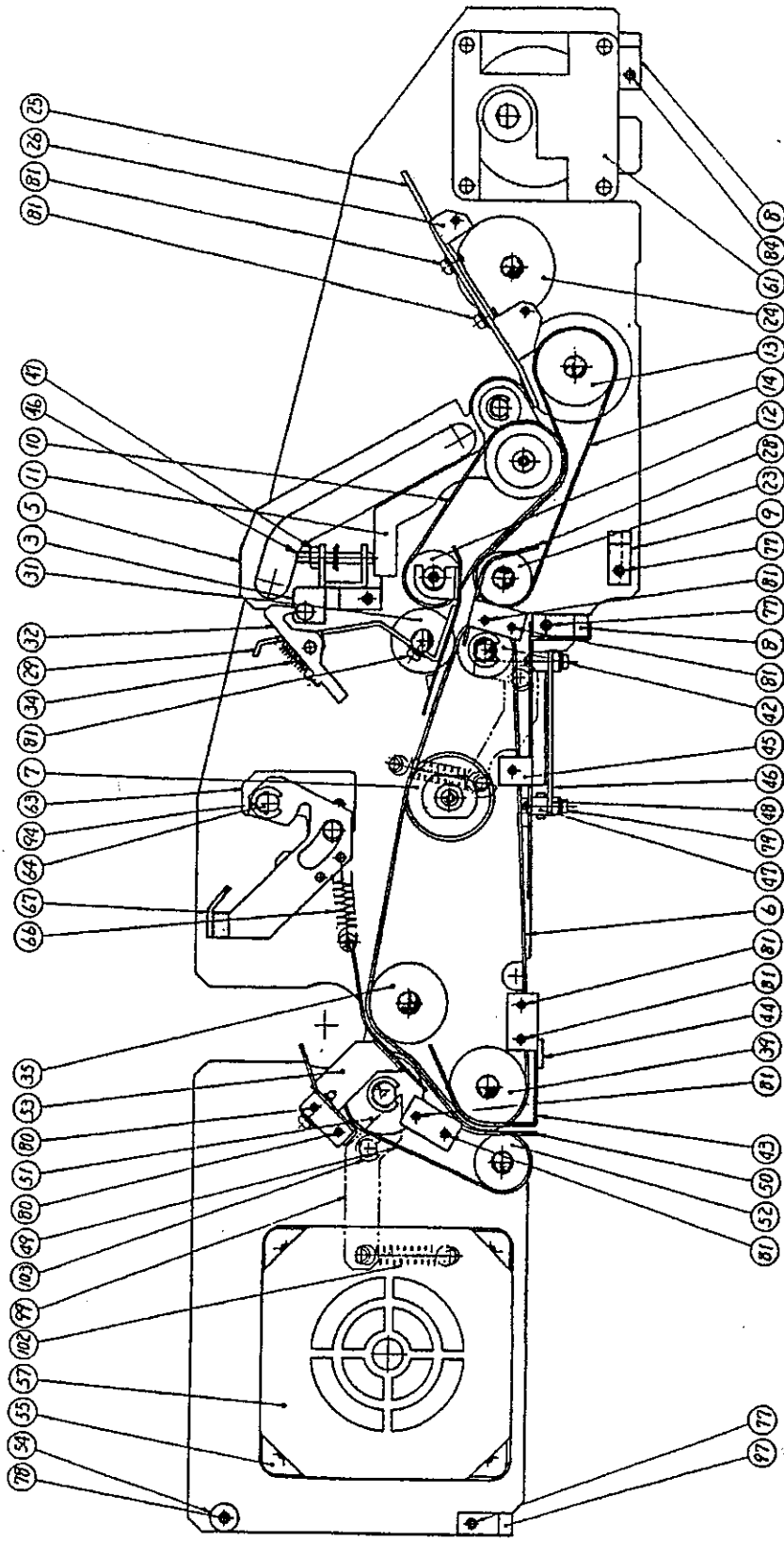
ITEM #	PART NO.	DESCRIPTION	TOSHIBA #	QTY
1		K, SIDE-PLT, UL	4364135300	1
2		K, SIDE-PLT, UR	4364135310	1
3		K, PIN-LOCK-L	4364134350	1
4		K, PIN-LOCK-R	4364134360	1
5		ASM, S-C-N16334*	4363636471	1
6	N88845	BLT, 040-N34086*	4363602670	4
7	N89129	T-BASE-RLR-CF	4363650810	1
8		STAY, A*-N33448*	4363557064	2
9		STAY, D*-N33633*	4363558471	1
10	N88831	BLT, 170-N34072*	4363602530	2
11	PG. 14	ASM, GAP-RLR	4364130680	1
12	PG. 15	ASM, IDU-N16296*	4363636501	1
13	PG. 15	ASM, FED-N16282*	4363636511	1
14	N88834	BLT, 240-N34075*	4363602560	3
15	N88908	KEY 25*25*010DN	4842902652	1
16	N90486	SPRING, BRKT-N33660*	4363558710	1
17	N90485	DISK, BB-N33658*	4363558691	1
18	N88861	PAD, D-B-N33656*	4363558670	1
19	N90484	DISK, BA-N33657*	4363558680	1
20	N88907	PIN, 20-N34095	4363637450	10
21	N88871	GEAR, B*-N33585*	4363558181	3
22	N88875	BRG-F608ZZ	4842112564	12
23	N88817	RLR D-H-N33344*	4363602072	1
24	PG. 16	ASM, SUB-N16281*	4363636521	1
25		K, BASE-SP	4364134250	1
26		BRKT, SP-BASE-L	4363600251	1
27		BRKT, SP-BASE-R	4363600241	1
28		GUIDE, I-N33502*	4363557565	1
29	PG. 17	ASM, TDET-UPPER	4364134460	1
30	N91125	SPRING, PRLR-N38788*	4363637320	2
31	PG. 16	ASM, T-S-N16286*	4363636331	1
32		K, LOCKER-L	4363648022	1
33		K, LOCKER-R	4363648052	1
34		SPE-040-035-130	4363270610	2
35	PG. 19	ASM, I-F-N16289*	4363636541	1
36	N88904	WAS, POL-N34097*	4363559910	2
37	N88900	PLY, T-B-N33844*	4363558740	1
38	N88136	BRG-608ZZ	2610000890	2
39	PG. 19	ASM, DJA-N16290*	4363636551	1
40	N88870	GEAR, A*-N33584*	4363558171	1
41	N88899	PLY, T-C-N33652*	4363559461	1
42	PG. 20	ASM, IEA-N16287*	4363636561	1
43		GUIDE, K-N33388*	4363602462	1
44		PLT, 10*190	4363637410	1
45		PLT, UD8-N33540*	4363557883	1
46	N91301	SCREW, SET-A-N33517*	4363557704	2
47	N51154	NUT, M4.7	7360400011	2
48				
49	N88843	BLT, 018-N34084*	4363602650	4
50		GUIDE, L-N33389*	4363602473	1

UPPER TRANSPORT

51	PG. 20	ASM, I-I-N16293*	4363636571	1
52	PG. 20	ASM, D-I-N16292*	4363636581	1
53		ASM, 4-J-N16297*	4363636591	1
54		STAY-E	4364133880	1
55	N88914	NUT, M-C-N33901*	4363558751	4
56		SPACE, M-N33393*	4363602510	1
57	N65461	ASM, MOTOR-TC	4364134710	1
58		ASM, WRG-EARTH-6	4364130660	1
59	N88913	NUT-M-B N33392*	4363602500	4
60	N65464	GHB-2GK50	4882380571	1
61		SPCR, M2-N34168*	4363559442	1
62	N65462	ASM, MOTOR-TB	4364134720	1
63		PLT, T-L-N34197*	4363559561	2
64		SFT, T-L-N34195*	4363559442	2
65		LVR, TLL-N34203*	4303559621	1
66		SPE-063-065-276	4363271260	2
67		LVR, TLR-N34204*	4363559631	1
68		CLR-040*105F	4350121170	1
69				1
70		Z-BB-T18R	4843553501	2
71		Z-BD-T30R	4843553502	2
72		CAP50*20MSZN3A	4842021066	4
73		CAP40*08MSZN3A	4842021042	2
74		CAP40*06MSZN3A	4842021041	4
75		9HSS40*04MSFB	7494400419	1
76		PAN40*18MSZN3AI	7040401811	1
77		ZPAN40*10MSZN3A	7640401051	11
78		ZPAN40*10MSZN3A	7640400851	8
79		ZPAN30*14MSZN3A	7640301451	4
80		ZPAN30*10MSZN3A	7640301051	4
81	N51172	ZPAN30*06MSZN3A	7640300651	20
82		BID40*06MSZ3AI	7043400611	1
83		BID30*10MSZN3AI	7043301011	2
84		ZPAN40*10MSZN3A	7640401041	2
85		ZPAN40*08MSZN3A	7640400841	3
86		FLT40*06MSZN3AI	7044400811	1
87		TZPAN3006MSZN3L	4842040690	2
88		IHDAS050MSZN3A	7400105011	4
89		IHWAS040MSZN3A	7400104011	4
90		DSWAS050SUZN3A	7401005021	4
91		DSWAS0402VZN3A	7401004021	8
92	N51140	6/ONUT40MSZN3A	7360400011	2
93		6/ONUT30MSZN3A	7360300011	2
94	N51153	ERR060SKZN3A	7405006031	11
95		ERR030SKZN3A	7405003031	4
96		OTWAS040SKZN3A	7402004031	1
97		STAY-M	4364133770	1
98		K, P-BLT-N16325*	4363636290	1
99		K, O-BR*-N16326*	4363636300	1
100		K, P-CL*-N16327*	4363636310	1
101		K, P-CR*-N16328*	4363636320	1
102		SPE-080-100-297	4363271570	4
103		ERR040SKZN3A	7405004031	4

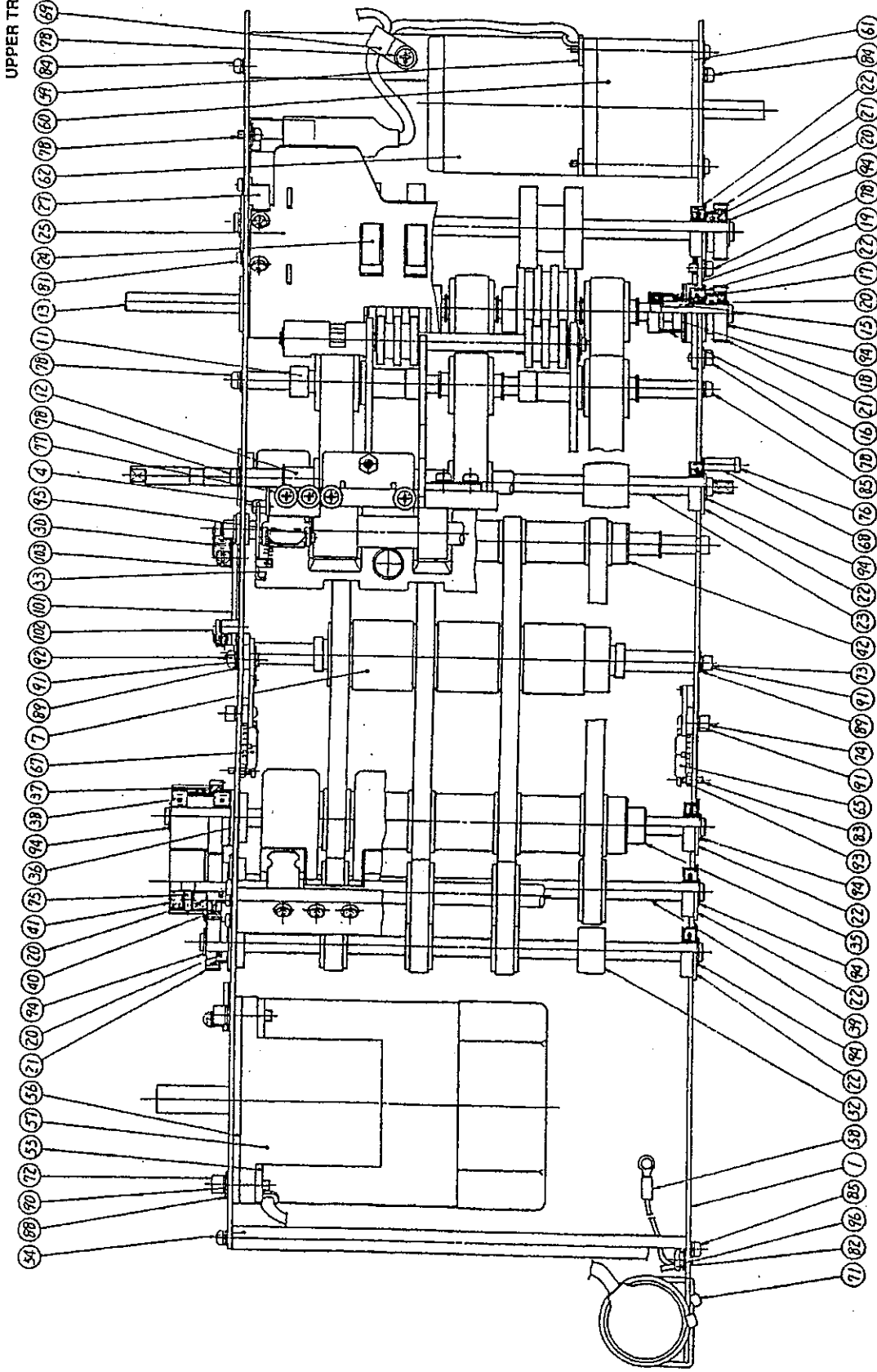


UPPER TRANSPORT



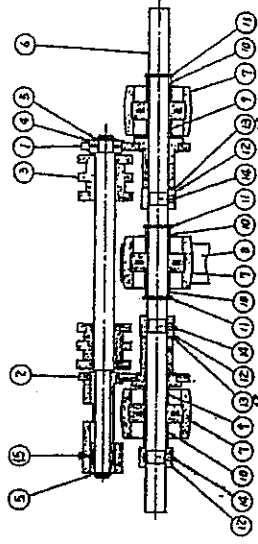
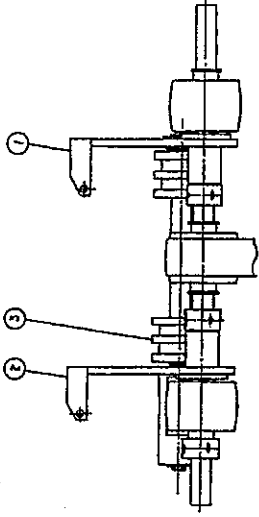
DWG. 4364135380
 1 OF 2
 TRANSPORT

UPPER TRANSPORT



DWG. 4364135380
2 OF 2

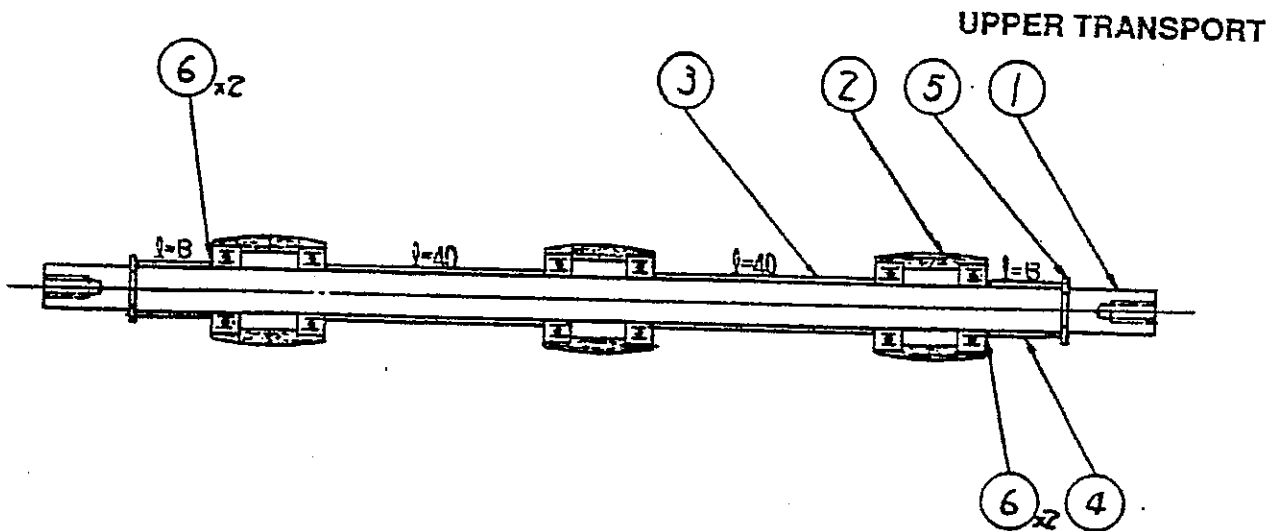
UPPER TRANSPORT



DRWG. #4364130680 ASSEMBLY, GAP-RLR

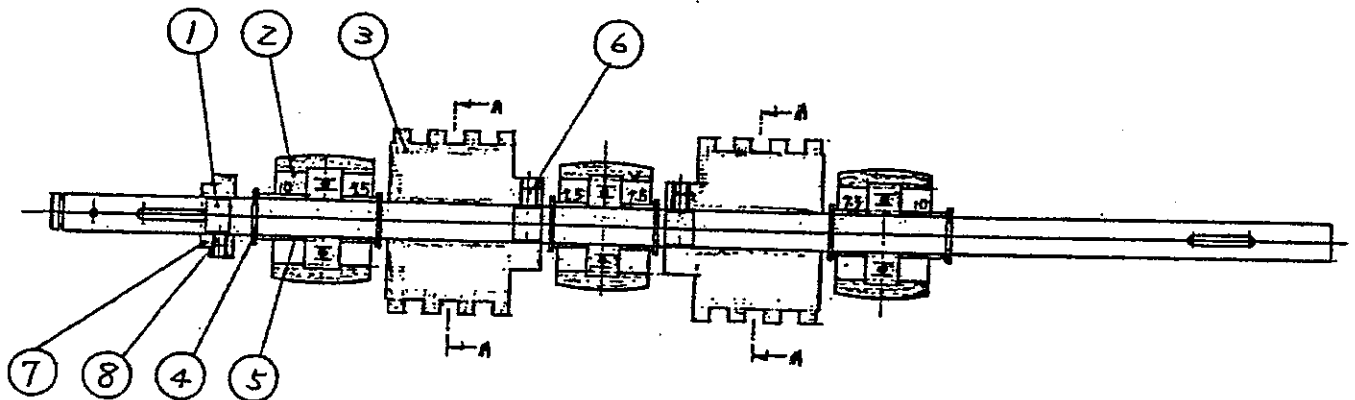
ITEM # PART NO. DESCRIPTION

ITEM #	PART NO.	DESCRIPTION	TOSHIBA #	QTY
1	K, HLD-L-W 16283*		4363637130	1
2	K, HLD-R		4364134240	1
3	N88809	HLR, GAP-N33446*	4363557043	1
4	N88877	BRG-LF-1360ZZ	4842112602	1
5	ERR040SKZN3A		7405004031	2
6	N91123	SFT, I-C-N 33494*	4363557481	1
7	N88623	RLR, I-C-N 33347*	4363602100	3
8	N88831	BLT, 170-N34072*	4363602530	1
9	CLR-080*0075F		4350123230	2
10	CLR-080*0100F		4350121680	4
11	N51153	ERR060SKZN3A	7405006031	3
12	CLR-N38767*		4364135640	3
13	WAS, POL-N34097*		4363559910	4
14	9HSS30/03 MSFB		7494300319	6
15	N88879	BRG FC-6	4842120521	1



DRWG. #4363636501 ASSEMBLY, IDU-N16296*

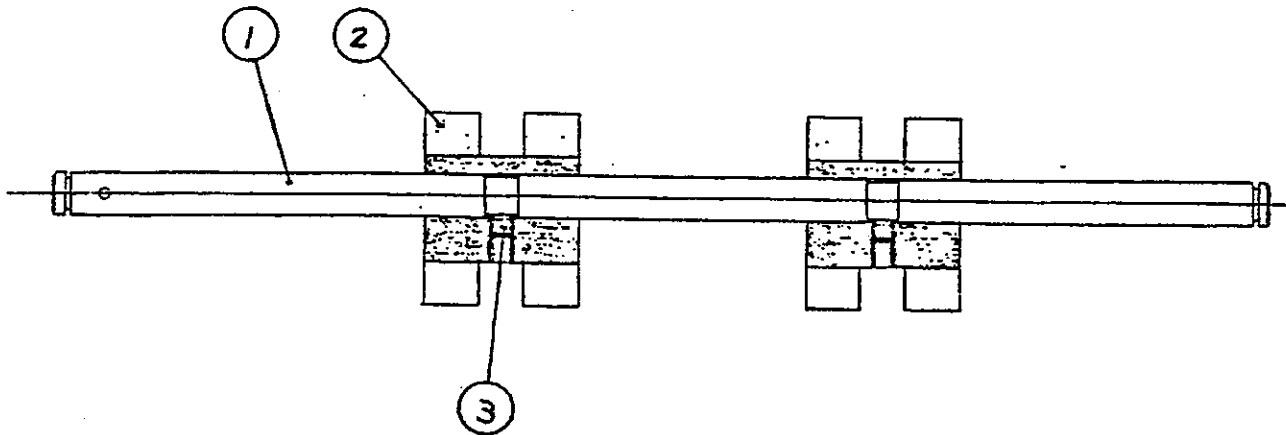
ITEM #	PART NO.	DESCRIPTION	TOSHIBA #	QTY
1	N91139	SFT, I-A-N334782*	4363557353	1
2	N88825	RLR, I-D-N33348*	4363602110	3
3		CLR, 080*0130F	4350121710	2
4		CLR, 080*0400F	4350121850	2
5	N51153	ERR, 060	7405006031	2
6	N88874	BRG, 688ZZ	4842100010	6



DRWG. #4363636511 ASSEMBLY, FEED-N16282*

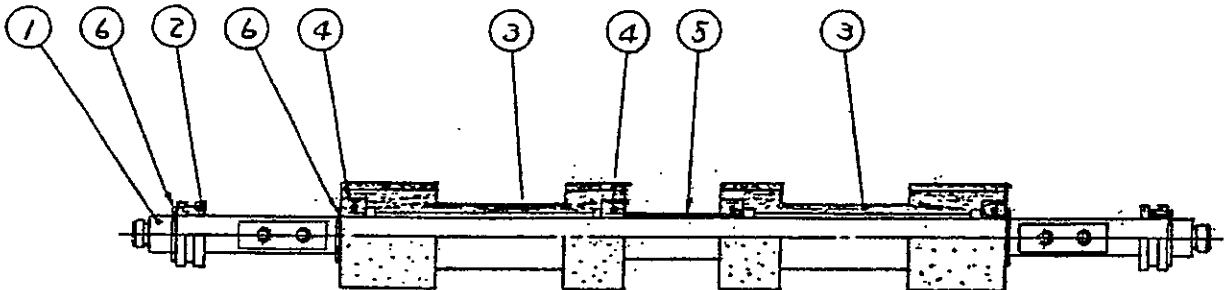
ITEM #	PART NO.	DESCRIPTION	TOSHIBA #	QTY
1	N91375	SHAFT, FEED-N33499	4363557532	1
2	N88823	RLR, I-C-N334942	4363602100	3
3	N88807	RLR, EXT-N33352*(FEED)	4363602120	2
4	N51153	ERR, 060	7405006031	6
5		CLR, 080*0100		2
6	N51262	SCREW, SET40/04	7494400419	2
7	N91376	COLLAR-N336591	4363558701	1
8	N51292	SCREW, SET30/03	7494300319	1

UPPER TRANSPORT



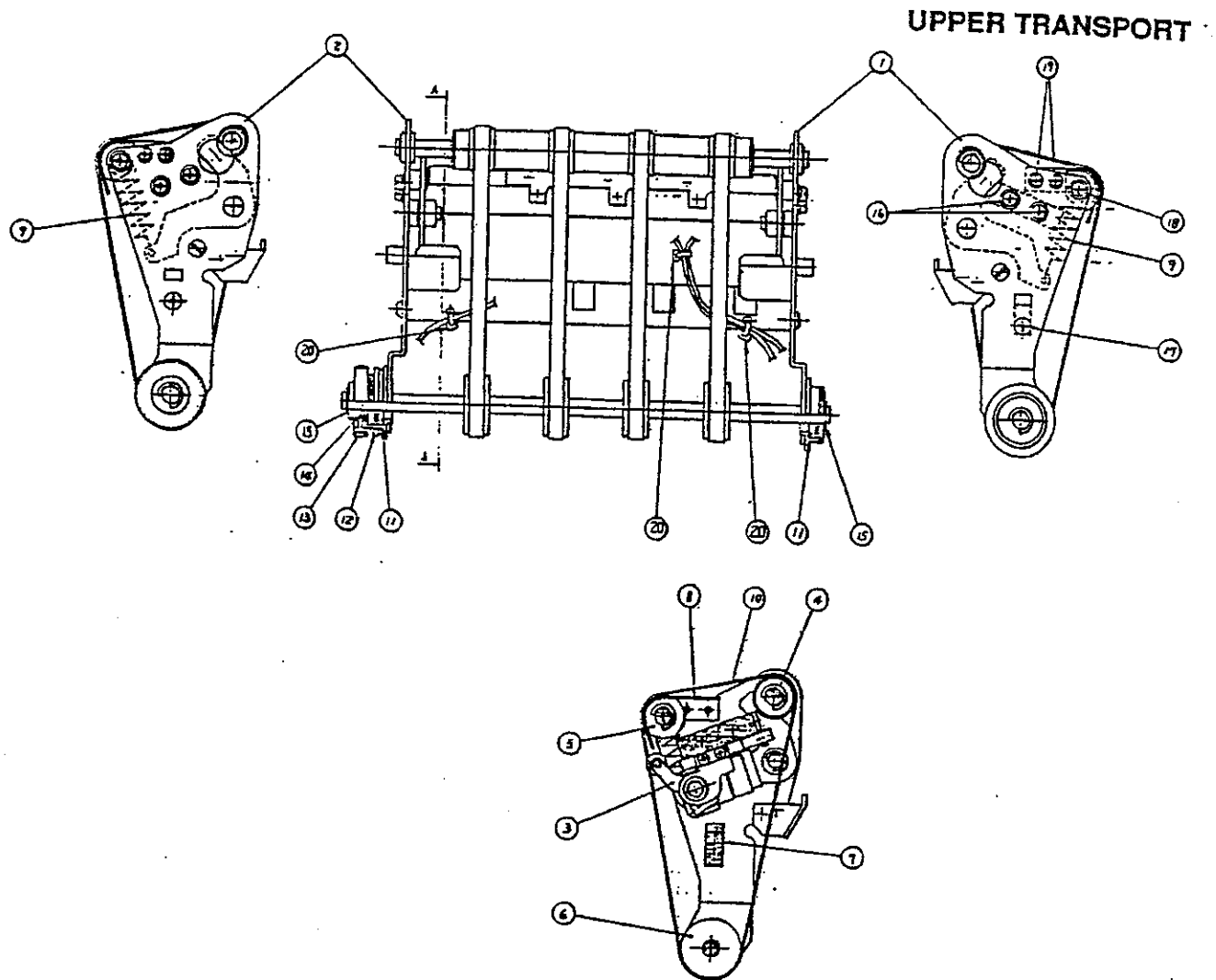
DRWG. #4363636521 ASSEMBLY, SUB-N16281*

ITEM #	PART NO.	DESCRIPTION	TOSHIBA #	QTY
1	N91124	SFT, SUB-N33500*	4363557541	1
2	N88808	RLR, SUB-N33607*	4363558300	2
3	N51262	SET 40/04	7494400419	2



DRWG. #4363636331 ASSEMBLY, T-S-N16286*

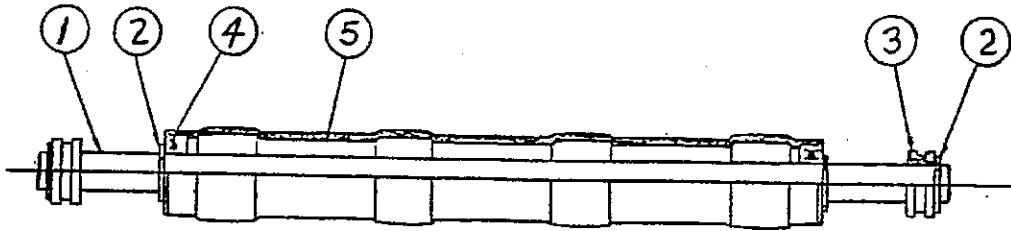
ITEM #	PART NO.	DESCRIPTION	TOSHIBA #	QTY
1		SHAFT, T-S-N334952		1
2	N88917	BUSH, CLR-D8	4363602760	2
3	N88822	RLR, DLB-23	4363648080	2
4	N88874	BRG, 688ZZ	4842100010	4
5		CLR, 080*200F		1
6	N51153	ERR, 060	7405006031	4



DRWG. #4364134460 ASSEMBLY, TRS-THICKNESS SENSOR-UPPER

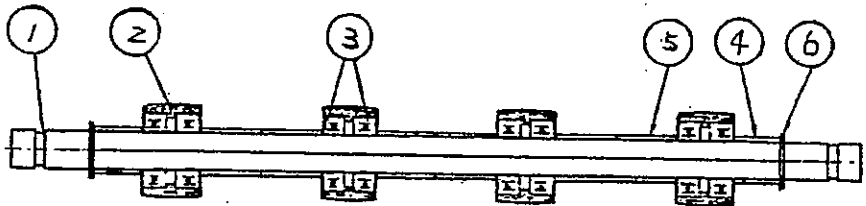
ITEM #	PART NO.	DESCRIPTION	TOSHIBA #	QTY
1		ASM. LCL-N16304*		
2		ASM. LCR-N16305*	4363636140	1
3	N65457	ASM. T-SENSE	4363636150	1
4	PG. 18	ASM. IEB-N16295*	4364134470	1
5	PG. 18	ASM. I-H-N16294*	4363636191	1
6	PG. 18	ASM. DJB-N16291*	4363636180	1
7		STAY, F*-N33673*	4363636170	1
8		GUIDE-Y	4363558781	1
9	N91135	SP. T-A*-N33678*	4363648001	1
10	N88844	BLT. 036-N34085*	4363558821	2
11	N91159	BRG-608LL	4363602660	4
12		RING. HG-N33459*		2
13	N88870	GEAR. A*-N33584*	4363557172	1
14	N88907	HPIN, 20-N34095*	4363558171	1
15	N51153	ERR060SKZN3A	4363637450	1
16		ZPAN40*10MSZN3A	7405006031	2
17	N51148	BID40*08MSZN3A	7640401051	4
18	N90482	ZPAN40*08MSZN3A	7043400813	2
19	N51172	ZPAN30*06MSZN3A	7640400851	2
20		Z-BD-T18R(TY-RAP)	7640300651	4
			4843553535	3

UPPER TRANSPORT



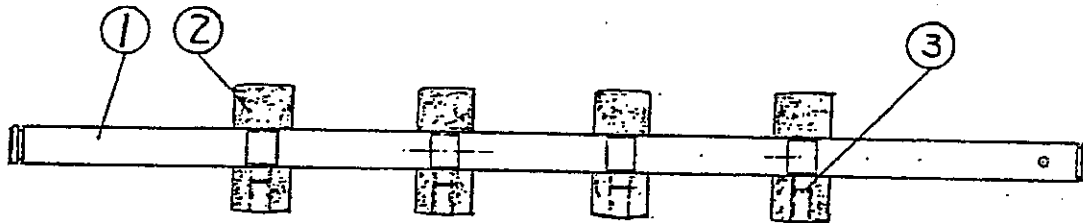
DRWG. #4363636191 ASSEMBLY, IEB-N16295*

ITEM #	PART NO.	DESCRIPTION	TOSHIBA #	QTY
1	N91132	SFT, I-E-N33697*	4363559021	1
2	N51153	ERR060	7405006031	4
3	N88917	CLR, D8*-N33395*	4363602761	2
4	N88145	BRG-LF-1680ZZ	4842112598	2
5	N88829	RLR, I-E-N33349*	4363602520	2



DRG. #4363636181 ASSEMBLY, I-H-N16294*

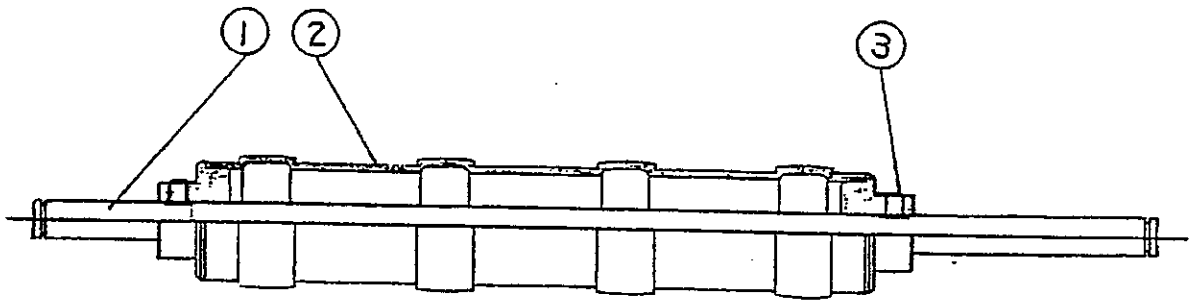
ITEM #	PART NO.	DESCRIPTION	TOSHIBA #	QTY
1	N91133	SFT, I-H-N33698*	4363559031	1
2	N88826	RLR, I-H-N33386*	4363602450	4
3	N88874	BRG-688ZZ	4842100010	8
4		CLR-080*0100F	4350121680	2
5		CLR-080*0130F	4350121710	6
6	N51153	ERR060	7405006031	2



DRWG. #4363636171 ASSEMBLY, DJB-N16291*

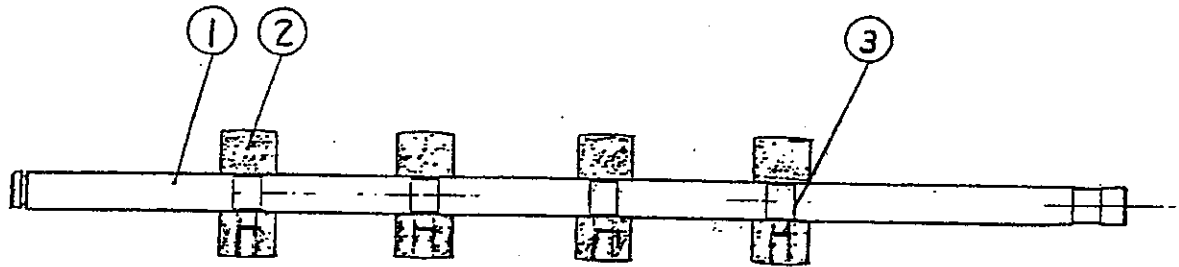
ITEM #	PART NO.	DESCRIPTION	TOSHIBA #	QTY
1	N91134	SFT, D-C-N33498*	4363557522	1
2	N89101	RLR, D-J-N33492*	4363557460	4
3	N51262	SET40/04	7494400419	8

UPPER TRANSPORT



DRWG. #4363636541 ASSEMBLY, I-F-N16289*

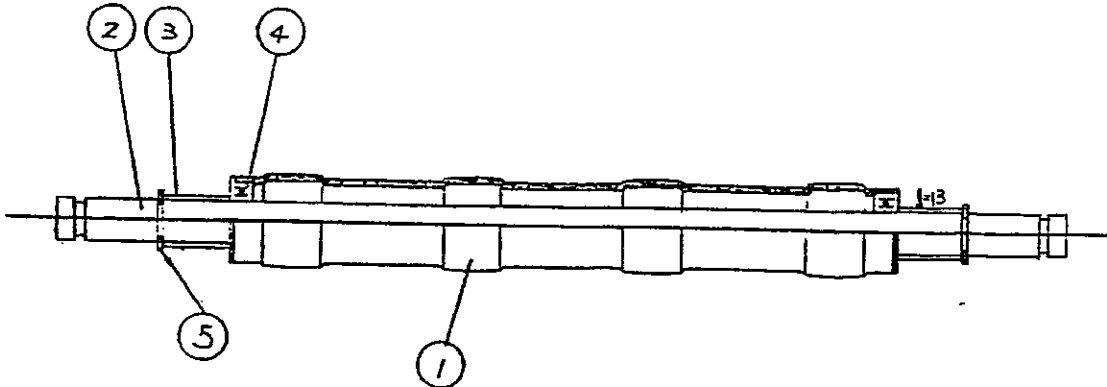
ITEM #	PART NO.	DESCRIPTION	TOSHIBA #	QTY
ASSB.	N91126	ASSEMBLY	4363636541	1
1		SFT, I-F-N33445*	4363557031	1
2		K, RLR-F-N33350*	4363557012	1
3	N51262	SET 40/04	7494400419	2



DRWG. #4363636551 ASSEMBLY, DJA-N16290*

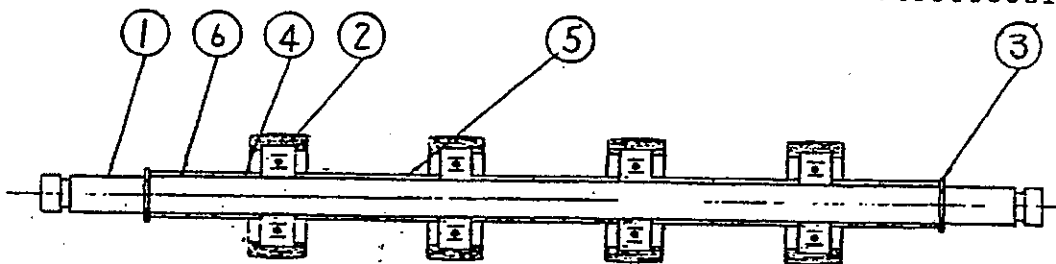
ITEM #	PART NO.	DESCRIPTION	TOSHIBA #	QTY
1	N91127	SFT, D-B-N33497*	4363557510	1
2	N89101	RLR, D-J-N33492*	4363557460	4
3	N51262	SET 40/40	7494400419	8

UPPER TRANSPORT



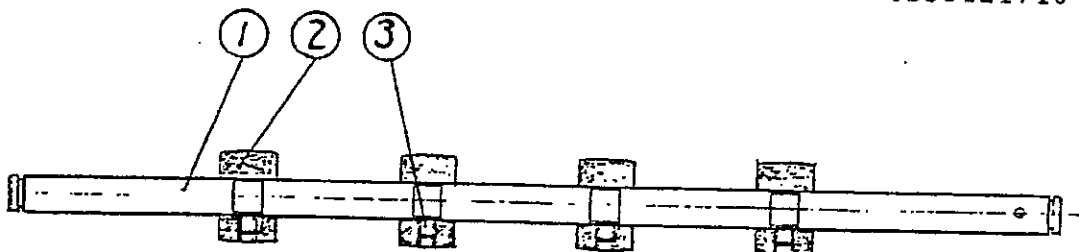
DRG. #4363636561 ASSEMBLY, IEA-N16287*

ITEM #	PART NO.	DESCRIPTION	TOSHIBA #	QTY
1	N88829	RLR, I-E-N33349*	4363602522	1
2	N91128	SFT, I-D-N33686*	4363558902	1
3		CLR-080*0130F	4350121710	2
4	N88145	BRG-LF-1680ZZ	4842112598	2
5	N51153	ERR060	7405006031	2



DRWG. #4363636571 ASSEMBLY, I-I-N16293*

ITEM #	PART NO.	DESCRIPTION	TOSHIBA #	QTY
1	N91128	SFT, I-D-N33686*	4363558902	1
2	N88824	RLR, I-I-N33385*	4363602440	4
3	N51153	ERR060	7405006031	2
4		CLR-080*0100F	4350121680	5
5		CLR-080*0180F	4350121760	3
6		CLR-080*0130F	4350121710	2



DRWG. #4363636581 ASSEMBLY, D-I-N16292*

ITEM #	PART NO.	DESCRIPTION	TOSHIBA #	QTY
1	N91129	SFT, D-A-N33496*	4363557502	1
2	N91130	RLR, D-I-N33491*	4363557450	4
3	N51262	SET 40/04	7494400419	8

LOWER TRANSPORT

DRWG. #4364135390 LOWER TRANSPORT-TRANSFER

ITEM #	PART NO.	DESCRIPTION	TOSHIBA #	QTY
1	N88857	STY, 301-N34064*		
2		PLT, RAIL-LL	4363637440	2
3		PLT, RAIL-LR	4364134960	1
4	N51148	BID 40*08MSZN3AI	4364134970	1
5		BID 40*06MSZN3AI	7043400811	7
6		ASM, LW-TRS-MECH	7043400611	9
7		PLT, S-L-N34519*	4364135400	1
8	N90482	ZPAN40*08MSZN3A	4363559770	2
9	N51172	ZPAN30*06MSZN3A	7640400851	10
10		BRKT, PUSHER	7640300651	10
11	N88896	PLY, V-A-N33359*	4364133160	1
12	N51262	9HSS40/04MSFB	4363602191	1
13	N88851	BLT, 5M4-N34092*	7494400419	4
14	N88846	BLT, L14-N39978*	4363602730	1
15	N88848	BLT, S20-N39976*	4363697780	1
16	N88849	BLT, S23-N39977*	4363697760	2
17	N88867	HNDL, TR-N33364*	4363697770	2
18		LABEL-KNOB	4363602240	2
19	N88901	ASM, CAH-515-N34061*	4363600150	2
20		Z-BD-T18R	4363637432	4
21		Z-BD-T30R	4843553501	15
22		PLT, WRB-N33722*	4843553502	5
23	N51140	6/O NUT40MSZN3AI	4363559240	1
24			7360400011	3
25		ASM, WRG-INPUT		1
26		ASM, WRG-BC	4364130790	1
27		ASM, WRG-DRIVE	4364134680	1
28		CLR-080*0100F	4364134670	1
29	N51153	ERR060SKZN3A	4350121680	1
30	PG. 34	ASM, TNS-N16681*	7405006031	2
31		CLR-080*0180F	4363636731	1
32		CLR-080*0095F	4350121760	1
33	N88830	K, RLR-T-N16683*	4350123270	1
34	N88911	RING, NG-N33459*	4363637640	2
35	N88912	PIN, STP-N33460*	4363557173	3
36	PG. 25	ASM, SWG-A	4363557180	4
37	PG. 26	ASM, SWG-B	4364135320	1
38	N88887	SPE-100-080-317	4364135200	1
39		ERR040SKZN3A	4363271610	1
40		ASM, LSD-N16922*	7405004031	2
41		SFT, L-N33475*	4363613570	1
42	N88882	BUSH, D8-N31930*	4363557320	1
43		CLR-D80*0130F	4363602161	2
44		K, LCK-L-N16312*	4350121710	2
45		K, LCK-R-N16313*	4363613220	1
			4363613330	1

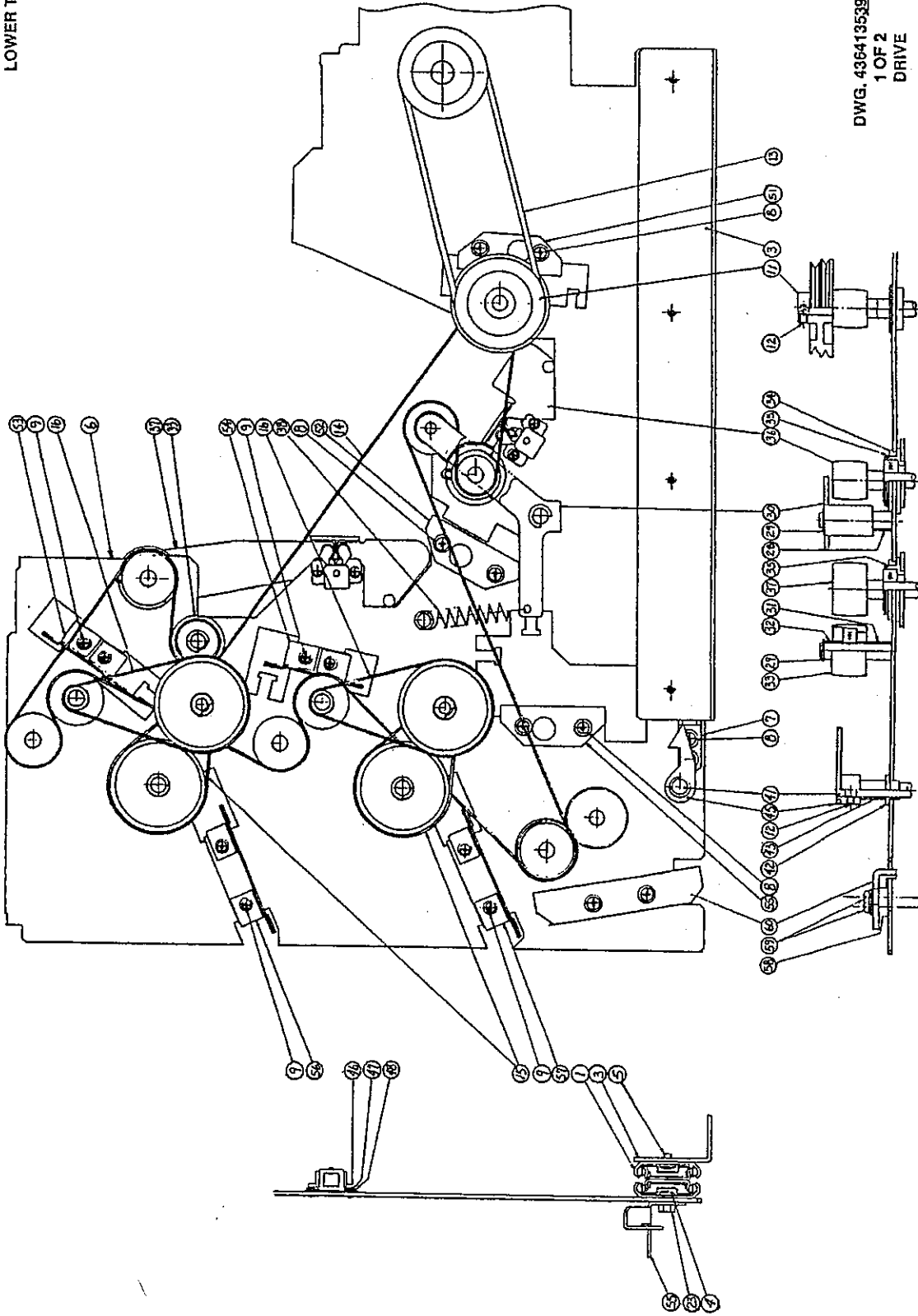
LOWER TRANSPORT

46			8
47	OSWAG 025SUEN3A	7401002521	8
48	IMWAS 025MGZN3A	7400102511	24
49	LABEL, C-OPERATE	4363774941	1
50			1
51	ASM, SENSOR-1-1	4364134790	51
52	ASM, SENSOR-5-1	4364134800	1
53	ASM, SENSOR-6-1	4364134810	1
54	ASM, SENSOR-7-1	4364134820	1
55	ASM, SENSOR-8-1	4364134830	1
56	ASM, SENSOR-9-1	4364134840	1
57	ASM, SENSOR-10-1	4364134850	1
58			2
59	ZPAN40*12MGZN3A	7640401251	2
60	ASM, SENSOR-11-1	4364134860	1

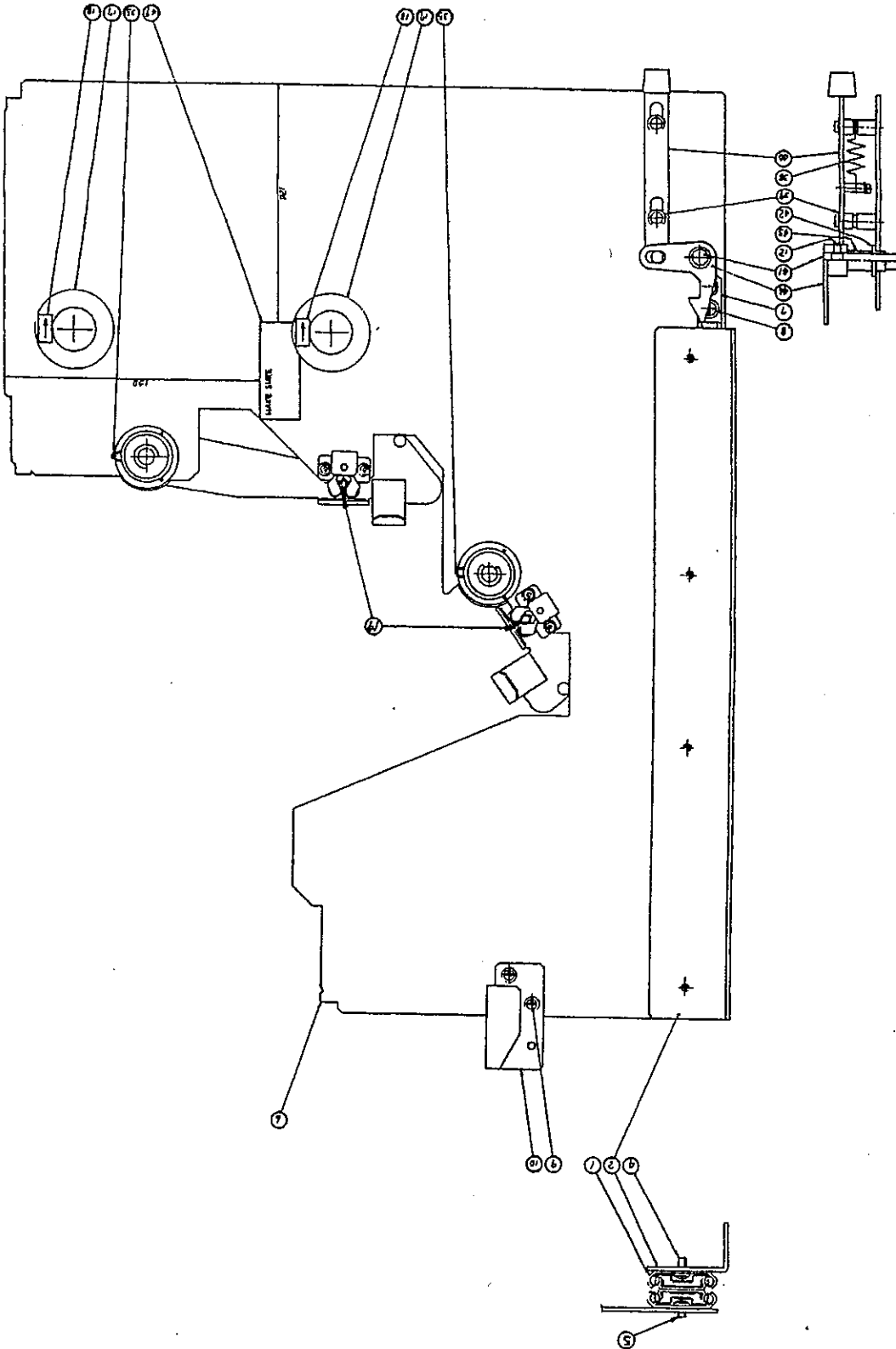


LOWER TRANSPORT

DWG. 4364135390
1 OF 2
DRIVE

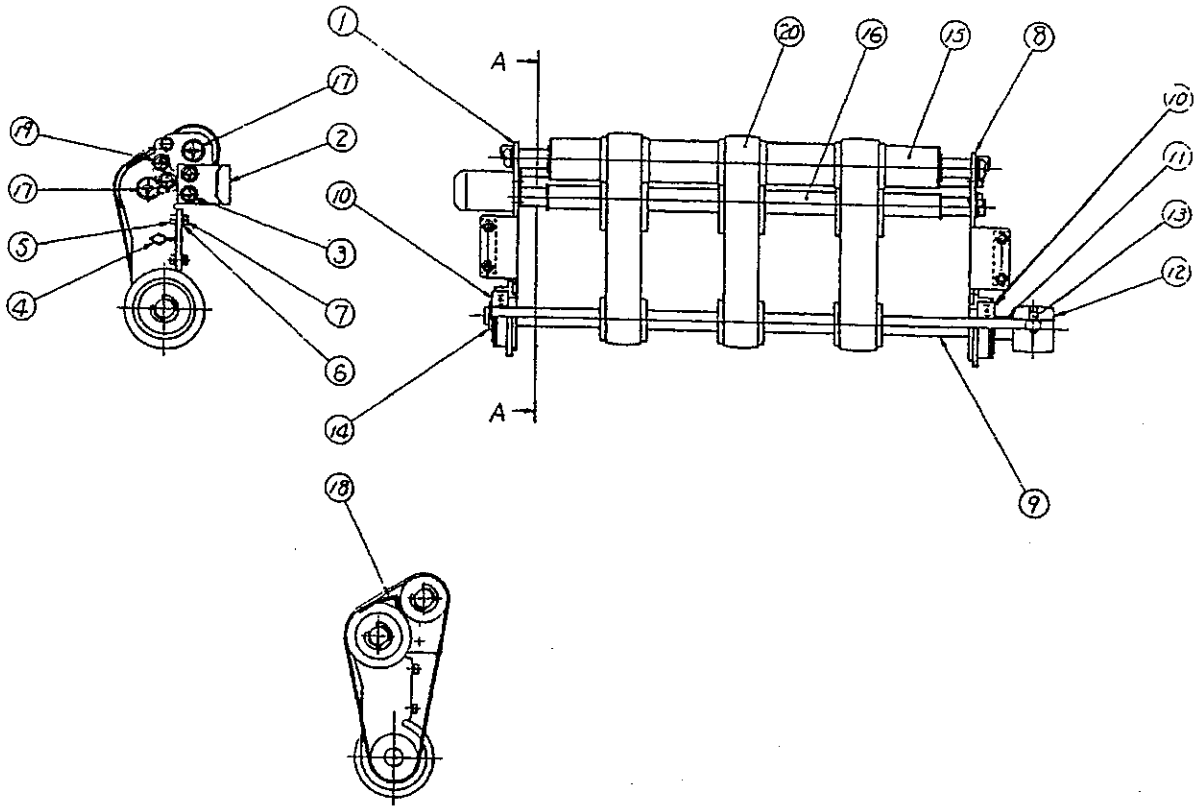


LOWER TRANSPORT



DWG. 4364135390
2 OF 2

LOWER TRANSPORT



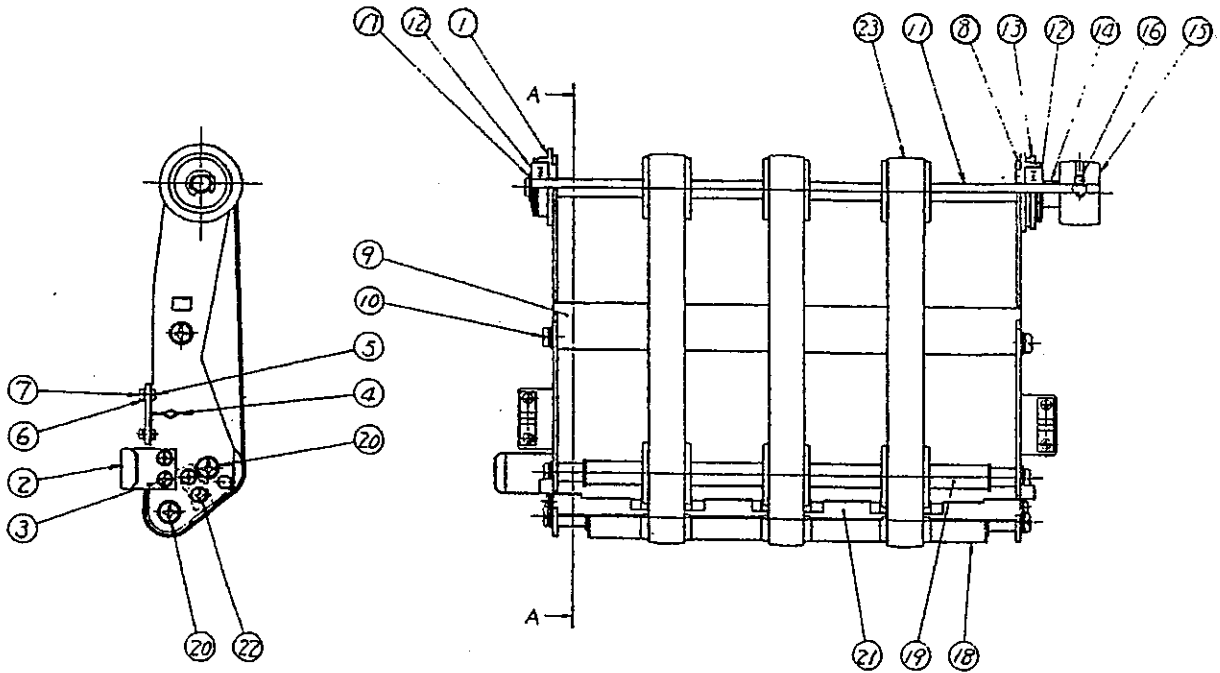
DRWG. #4364135320 ASSEMBLY, SWG-A

ITEM # PART NO. DESCRIPTION

TOSHIBA # QTY

ITEM #	PART NO.	DESCRIPTION	TOSHIBA #	QTY
1		K, SWG-S-PLT-AL	4364134380	1
2		HNDL, OP-N33377*	4363602362	1
3		TZPAN30*06M5ZN3L	4842040690	2
4		CAH, 51S-N34061*	4363677432	2
5		PAN25*05MSZN3A	7040250511	4
6		ODSWAS025SUZ3A	7401002521	4
7		6/ONUT25MSZN3A	7360250011	4
8		K, SWG-S-PLT, AK	4364134370	1
9	N88811	RLR, D-B-N33338*	4363602013	1
10	N91159	BRG-608LL		2
11		CLR-080*0085F	4350123250	1
12	N91136	PLY, D-A-N33481*	4363557382	1
13	N51262	9HSS40/04MSFB	7494400419	2
14	N51153	ERR060SKZN3A	7405006031	1
15	PG. 27	ASM. IBS-N16670*	4363636820	1
16	PG. 27	ASM. ICS-N16671*	4363636830	1
17	N90482	ZPAN40*08MSZN3A	7640400851	4
18		K, GUIDE-G, PAPER	4364133800	1
19	N51172	ZPAN30*06MSZN3A	7640300651	4
20	N88833	BLT. 210-N34074*	4363602550	3

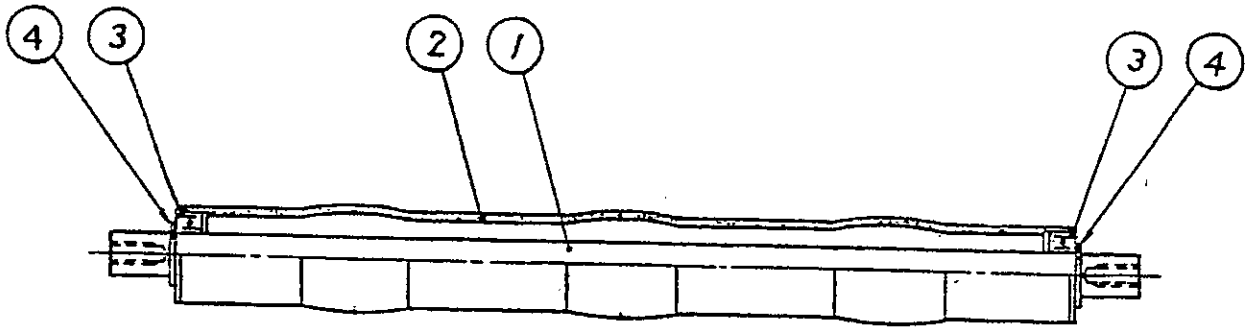
LOWER TRANSPORT



DRWG. #4363135200 ASSEMBLY, SWG-B

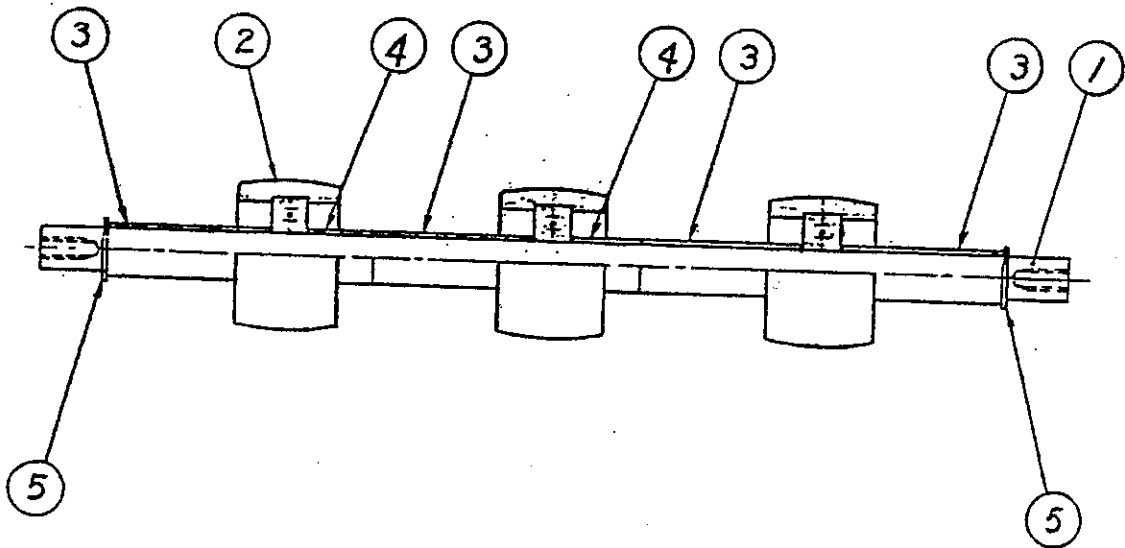
ITEM #	PART NO.	DESCRIPTION	TOSHIBA #	QTY
1		K, SWG-S-PLT, BL	4364134400	1
2		HNDL, OP-N33377*	4363602362	1
3		TZPAN3006MSZW3L	4842040690	2
4		CAH, 51S-N34061*	4363637432	2
5		PAN25*05MSZN3A	7040250511	4
6		OSWA5025SHZN3A	7401002521	4
7		6/ONUT25MSZN3A	7360250011	4
8		KSWG-S-PLT, BL	4364134390	1
9		STAY, B*-N33444*	4363557070	1
10		ZPAN40*10MSZN3A	7640401051	2
11	N88812	RLR, D-C-N33339*	4363602023	1
12	N91159	BRG-608LL		2
13		RING, HG-N33459*	4363557172	1
14		CLR, -080*0085F	4350123250	1
15	N91138	PLY, D-B-N33482*	4363557392	1
16	N51262	9HSS40/04MSFR	7494400419	2
17	N51153	ERR060SKZN3A	7405006031	1
18	PG. 27	ASM. IBS-N16670*	4363636820	1
19	PG. 27	ASM. ICS-N16671*	4363636830	1
20	N90482	ZPAN40*08M52N3A	7640400851	1
21		K, GUIDE-G, PAPER	4364133800	1
22	N51172	ZPAN30*06MSZN3A	7640300651	4
23	N88839	BLT, 360-N34080*	4363602610	3

LOWER TRANSPORT



DRWG. #4363636821 ASSEMBLY, IBS-N16670*

ITEM #	PART NO.	DESCRIPTION	TOSHIBA #	QTY
1	N91137	SFT, I-B-N33479*	4363557363	1
2	N88828	RLR, I-B-N33346*	4363602090	1
3	N88145	BRG-LF-1680ZZ	4842112598	2
4	N51153	ERRO60	7405006031	2



DRWG. #4363636831 ASSEMBLY, ICS-N16671*

ITEM #	PART NO.	DESCRIPTION	TOSHIBA #	QTY
1	N91137	SFT, I-B-N33474*	4363557363	2
2	N88823	RLR, I-C-N33347*	4363602100	3
3		CLR-080*0300F	4350121820	4
4		CLR-080*0130F	4350121710	2
5	N51153	ERRO60	7405006031	2

LOWER TRANSPORT

DRWG. #4364135400 LOWER TRANSPORT-MECH.

ITEM #	PART NO.	DESCRIPTION	TOSHIBA #	QTY
1		PAN40*40MSZN3AI	7040404011	1
2		CLR-040*0250F	4350121240	2
3		CLR-040*0105F	4350123870	3
4		K, SIDE-PLT-LL	4364130690	1
5		SPE-100-140-515	4363271700	1
6		HOOK-L, SP	4364133410	1
7	N90479	IMWAS050MSZN3A	7400105011	3
8		OSWAS050SDZN3A	7401005021	3
9	N51140	6/ONVT50MSZN3A	7360500011	3
10		K, SIDE-PLT-LR	4364130700	1
11		STAY, A*-N33448*	4363557064	6
12	N51149	ZPAN40*10MSZN3A	7640401051	10
13		ZPAN40*10MSN3A	7640401041	2
14	N91141	ASM, WDB-N16663*	4363613450	2
15	N88810	RLR, D-A-N33337*	4363602003	1
16	N88837	BLT-290-N34078*	4363602590	3
17	N88875	BRG-F608ZZ	4842112564	14
18		CLR-080*0050F	4350123180	5
19		CLR-D80*0050F	4350123210	5
20	N91136	PLY, D-A-N33481*	4363557382	1
21		9H66/04MSFB	7494400419	16
22	N51153	ERR060SKZN3A	7405006031	14
23		GUIDE, B-N33464*	4363557224	1
24	N51172	ZPAN30*06MSZN3A	7640300651	59
25	N90482	ZPAN40*08MSZN3A	7640400851	28
26	PG. 33	ASM, I-A-N16666*	4363636671	3
27	PG. 33	ASM, I-B-N16667*	4363636681	6
28	N88835	BLT, 250-N34076*	4363602570	3
29		GUIDE, A-N33463*	4363557212	1
30	PG. 33	ASM, I-D-N16669	4363636691	3
31	PG. 34	ASM, DR-E	4364134430	1
32	N88842	BLT, 675-N39975*	4363697750	3
33		CLR, DBS--N33725*	4363559270	2
34		SP, 090*120*371	4363637540	4
35	N88870	GEAR. A*-N33584*	4363558171	2
36		GUIDE-C, CF401	4363697250	2
37		GUIDE, S-N34999*	4363604832	1
38	N90482	ZPAN40*08MSZN3A	7640400841	2
39	N88816	RLR, D-G-N33343*	4363602063	2
40	N88840	BLT, 375-N34081*	4363602629	3
41	N91138	PLY, D-B-N33482*	4363557392	5
42	N91140	PLY, WDA-N33456*	4363557143	2
43	N88838	BLT, 330-N34079*	4363602600	3
44	PG. 34	ASM, I-C-N16668*	4363636701	1
45	N88813	RLR, D-D-N33340*	4363602033	1
46	N88841	BLT, 455-N39974*	4363697740	3
47	PG. 34	ASM, GUIDE-A	4364130720	1
48	N88815	RLR, D-F-N33342*	4363602053	2
49	N88832	BLT, 200-N34073*	4363602540	3
50	N88847	BLT, S20-N34088*	4363602690	4
51	PG. 34	ASM, ID2-N16672*	4363636851	2

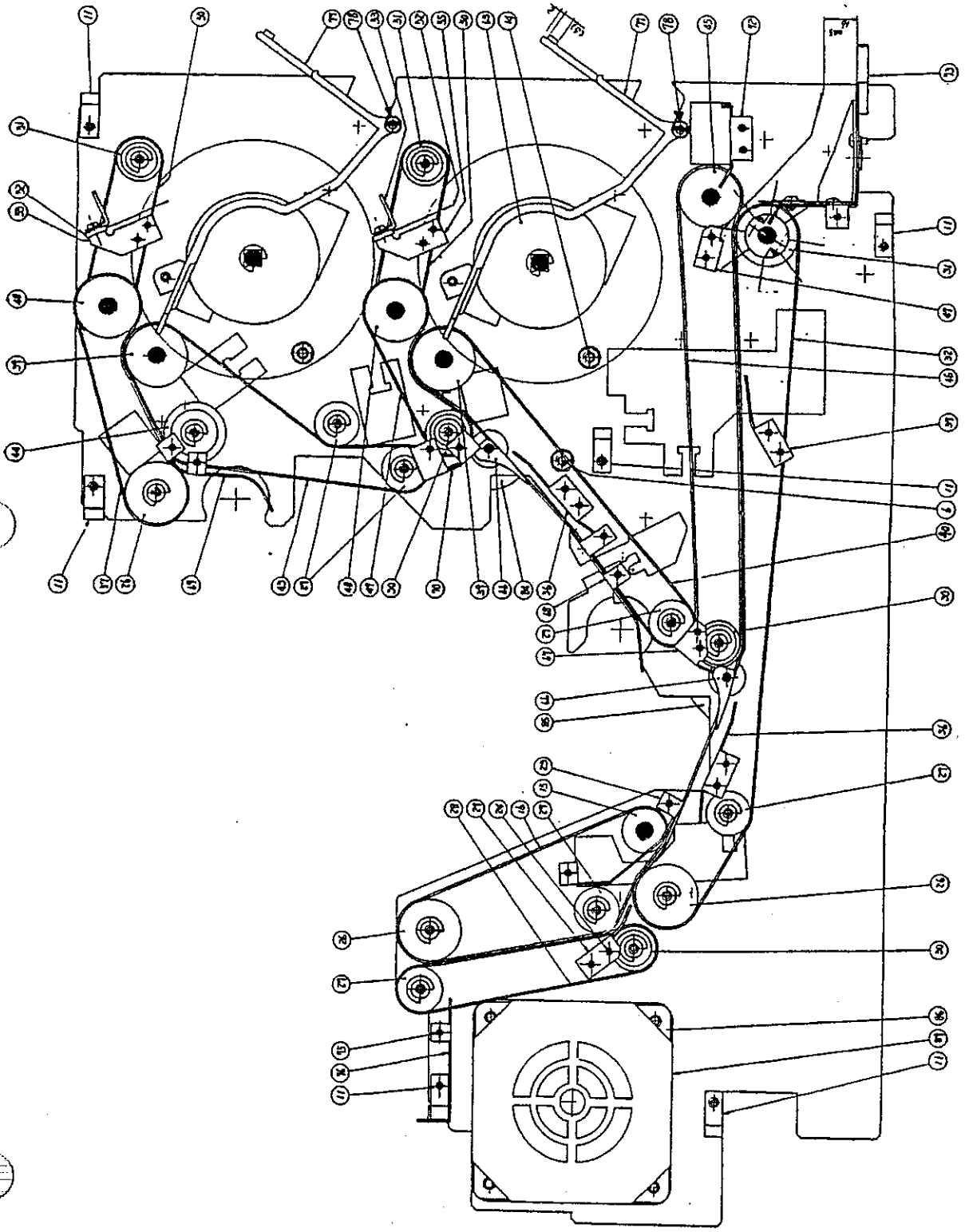
LOWER TRANSPORT

52	N88859	BRUSH-50*180	4363588801	2
53		HLD, BRS-N38793*	4363637370	2
54	N51147	BID-30*06MSZN3AI	7043300611	6
55		BKT, BRL-N38791*	4363637350	2
56		BKT, BR R-N38792*	4363637360	2
57	N88836	BLT, 260-N34077*	4363602580	3
58	N88882	BUSH, D8-N31930*	4363602161	4
59	N88905	WAS, POL-N34097*	4363559910	4
60		CLR-080*0150F	4350121730	2
61		CLR-080*0105F	4350123280	2
62	N91142	PLY, WDC-N33358*	4363602181	2
63	PG. 34	ASM, FIN-SET	4364130710	2
64		CLR-040*0080F	4350121100	2
65	N88881	BUSH, D4-N33353*	4363602131	2
66	N88864	ASM, GT-N13386*	4363767150	2
67		GUIDE, D-N33365*	4363602254	1
68		GUIDE, E-N33366*	4363602265	1
69		GUIDE, E-N33367	4363602272	1
70		GUIDE, N-N34971*	4363559780	1
71		FLT30*06MSZN3AI	7044300611	1
72		PLT, REJECT-UP	4364133080	1
73		ASM, REJ-TRAY	4364135280	1
74		OTWAS040SKZN3A	7402004031	1
75		TZPAN3006MSZN3L	4842040690	2
76		PLT, STP-N33480*	4363557372	1
77	N91143	TRAY, POCKET	4364135080	2
78	N88915	SCREW, 4-N33467*	4363557250	4
79		CKT-S-RMD	4363357250	4
80		FORM, TR-N34984F	4363559890	4
81		NUT, M-B-N33392*	4363602501	4
82	N51172	ZPAN40*06MSZN3A	7640400651	4
83		Z-BD-T18R	4843553501	2
84	N65466	ASM, GT2-N16678*	4363636890	1
85	N65467	ASM, GT-1-N16679*	4363636900	1
86	N88914	MDT, M-C-N33901*	4363558751	4
87		ZPAN50*20MSZN3A	7640502051	4
88		BID40*06MSEN3AI	7043400611	1
89		ASM, PLY-MTR-BC	4364134260	1
90	N65460	ASM, MTR-KABU	4363767100	1
91	N88860	BRUSH, REJ.	4363767320	1

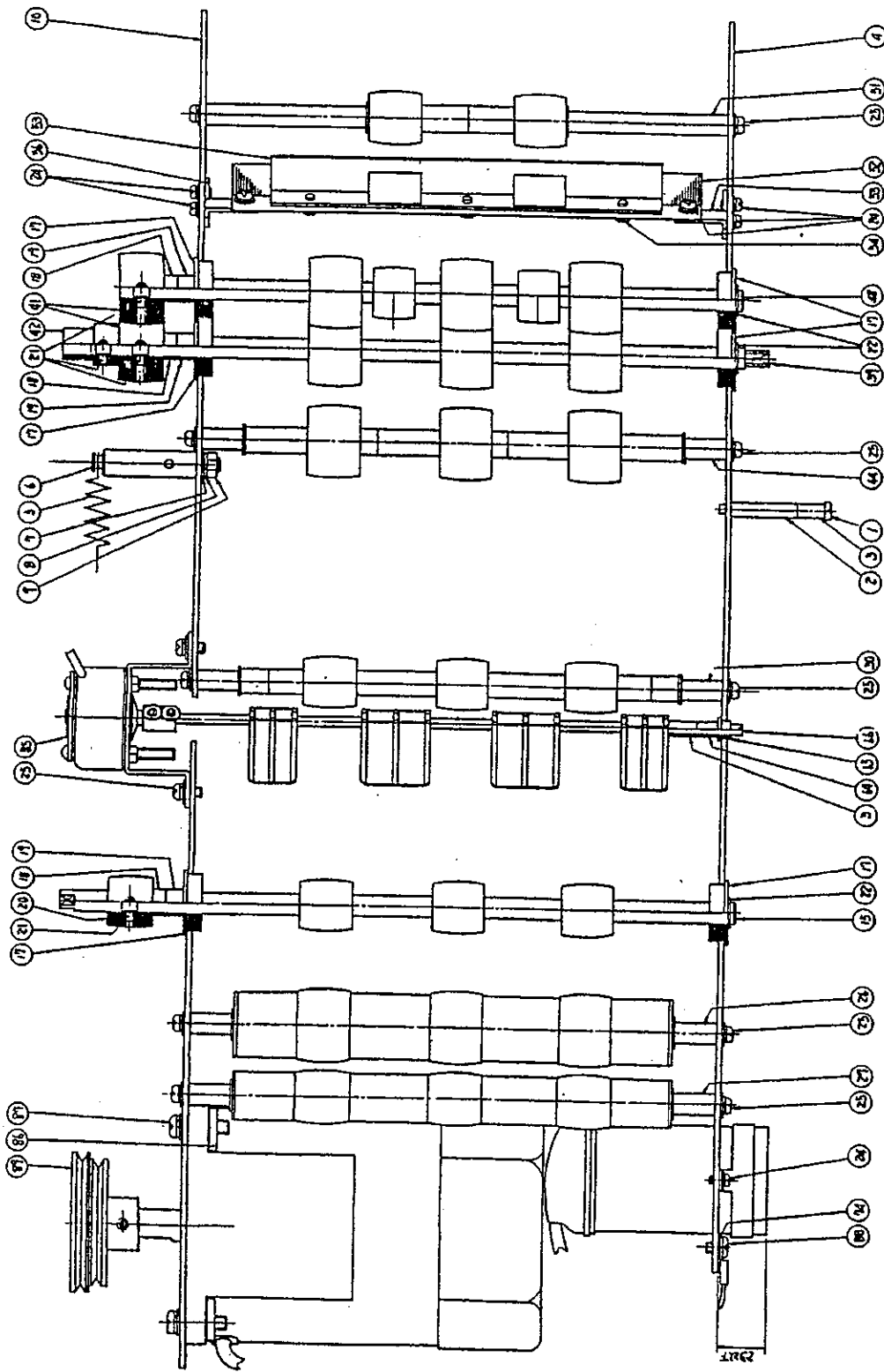


LOWER TRANSPORT

DWG. 4364135400
1 OF 3
TRANSPORT

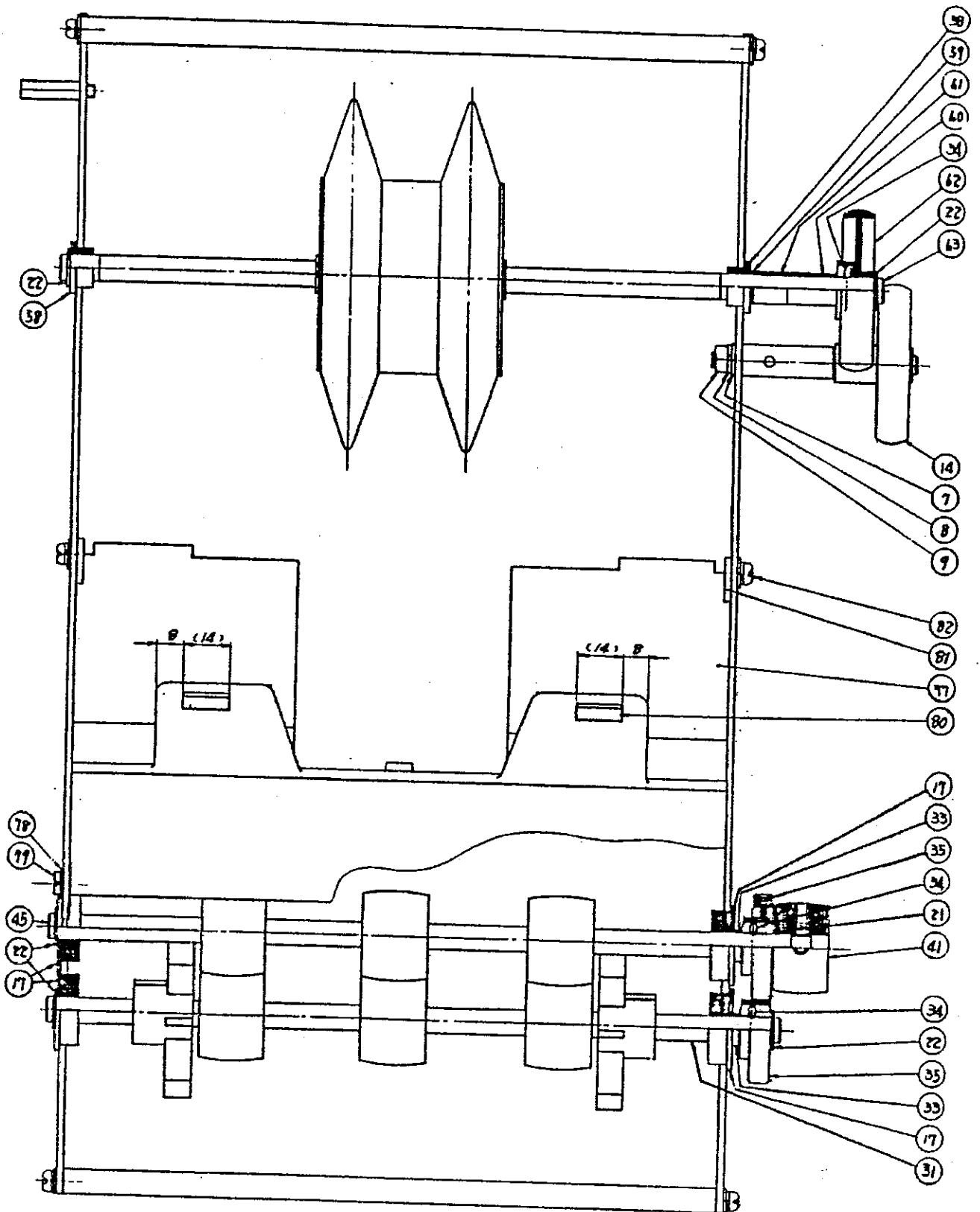


LOWER TRANSPORT



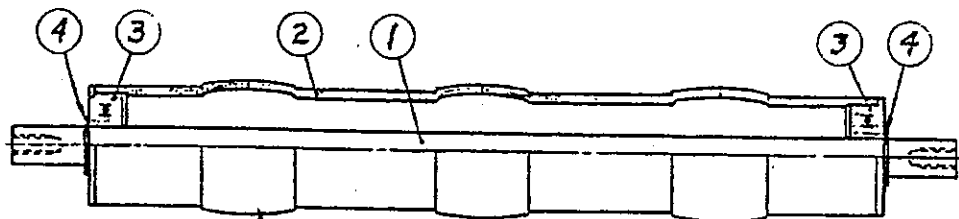
DWG. 4364135400
2 OF 3
ROLLERS

LOWER TRANSPORT



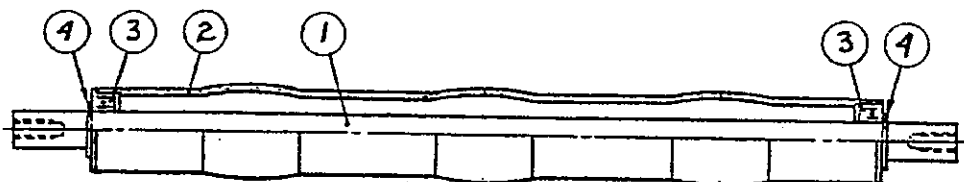
DWG. 4364135400
3 OF 3

LOWER TRANSPORT



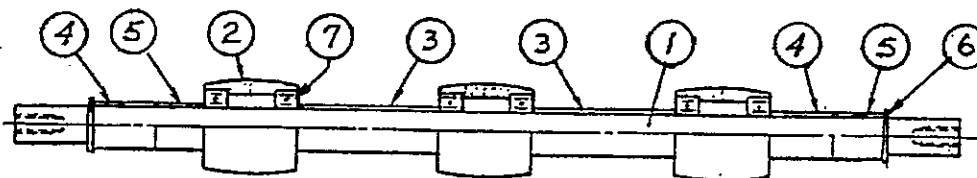
DRWG. #4363636671 ASSEMBLY, I-A-N16666*

ITEM #	PART NO.	DESCRIPTION	TOSHIBA #	QTY
1	N91139	SFT, I-A-N33478*	4363557353	1
2	N88827	RLR, I-A-N33345*	4363602080	1
3	N88875	BRG-F608ZZ	4842112564	2
4	N51153	ERR060	7405006031	2



DRWG. #4363636681 ASSEMBLY, I-B-N16667*

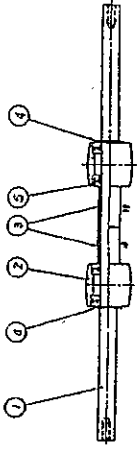
ITEM #	PART NO.	DESCRIPTION	TOSHIBA #	QTY
1	N91139	SFT, I-A-N33478*	4363557353	1
2	N88828	RLR, I-B-N33346*	4363602091	1
3	N88145	BRG-LF-1680ZZ	4842112598	2
4	N51153	ERR060	7405006031	2



DRWG. #4363636691 ASSEMBLY, I-D-N16669*

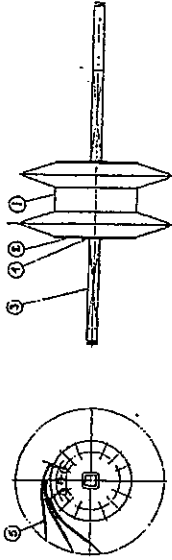
ITEM #	PART NO.	DESCRIPTION	TOSHIBA #	QTY
1	N91139	SFT, I-A-N33478*	4363557353	1
2		ASS, IRD-N16673*	4363613530	3
3		CLR080*0300F	4350121820	2
4		CLR080*0130F	4350121710	2
5		CLR080*0105F	4350123280	2
6	N51153	ERR060	7405006031	2

LOWER TRANSPORT



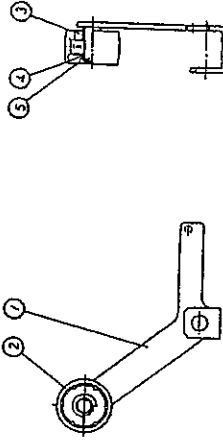
DRWG. #4363636851-ASSEMBLY, ID2-NI6672*

ITEM #	PART NO.	DESCRIPTION	TOSHIBA #	QTY
1		SHAFT, ID2-N387860		1
2	N88825	RLR, I-D-NI66730	4363602110	2
3		CLR, 080*0180F	4350121760	2
4	N51153	ERR, 060	7405006031	2
5	N88874	BRC, 688ZZ	4842100010	4



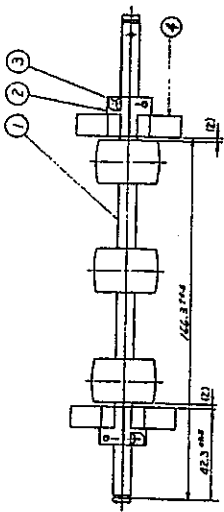
DRWG. #4364130710 ASSEMBLY, FIN-SFT

ITEM #	PART NO.	DESCRIPTION	TOSHIBA #	QTY
1	N88862	ASM, FIN-N18284*	4363767180	1
2		PLT, N-S-N3354*	4363602142	2
3		SFT, N-R-N33461*	4363557191	1
4	N51153	ERR060SKZNA	7405006031	2
5	N88863	FIN-CA411	4362407240	32



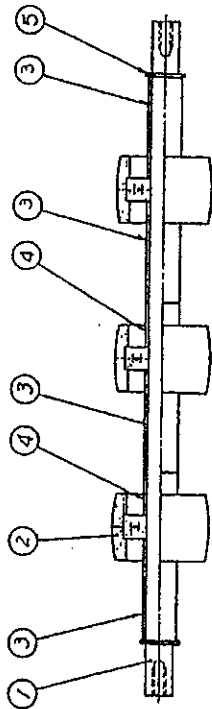
DRWG. #4363636731 ASSEMBLY, TNS-NI6681*

ITEM #	PART NO.	DESCRIPTION	TOSHIBA #	QTY
1		K, LVR-T-NI6682*	4363636761	1
2	N88830	K, RLR-T-NI6683*	4363636740	1
3		CLR-080-0070F	4350123220	1
4		CLR, DB*-N33628*	4363558460	1
5	N51153	ERR060	7405006031	1



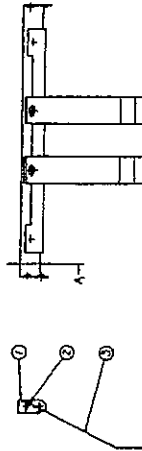
DRWG. #4364134430 ASSEMBLY, DR-E

ITEM #	PART NO.	DESCRIPTION	TOSHIBA #	QTY
1	N88814	ASM, RLR, D-E-N33341*	4363602043	1
2	N90123	ASM, REJ-WING	4364134440	4
3		PAN30*10MSZNA	7040301011	4
4	N89157	FIN, RJT-PO	4364114580	16



DRWG. #4363636701 ASSEMBLY, I-C-NI6668*

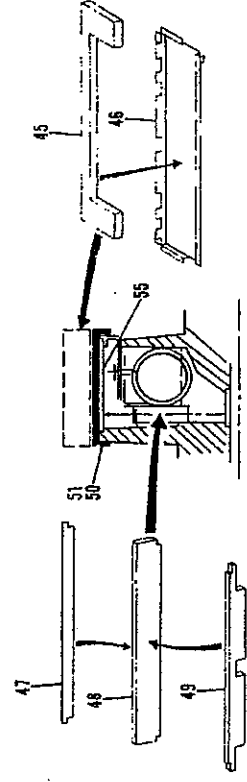
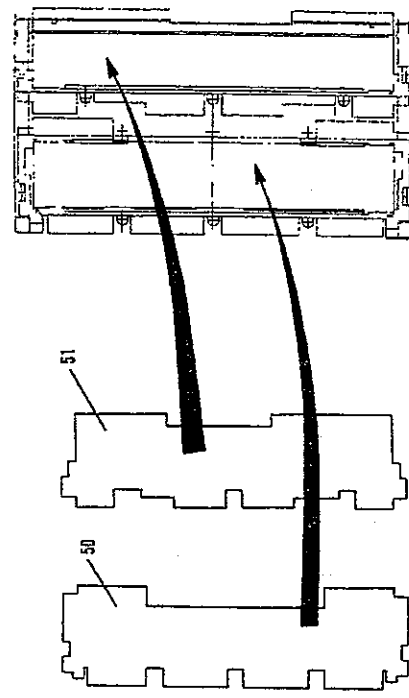
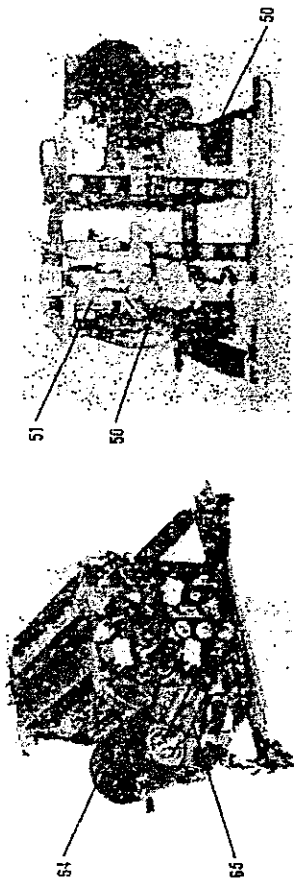
ITEM #	PART NO.	DESCRIPTION	TOSHIBA #	QTY
1	N91139	SFT, I-A-N33478*	4363557353	1
2	N88823	RLR, I-C-N33347*	4363602100	3
3		CLR080*0300F	4350121820	4
4		CLR080*0130F	4350121710	2
5	N51153	ERR060	7405006031	2



DRWG. #4364130720 ASSEMBLY, GUIDE-A

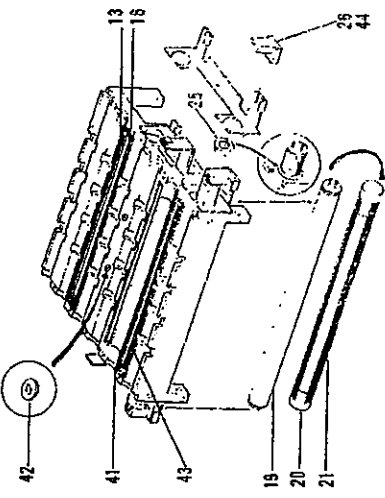
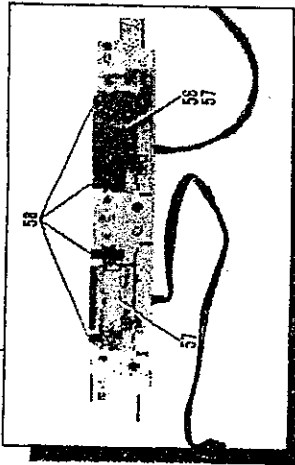
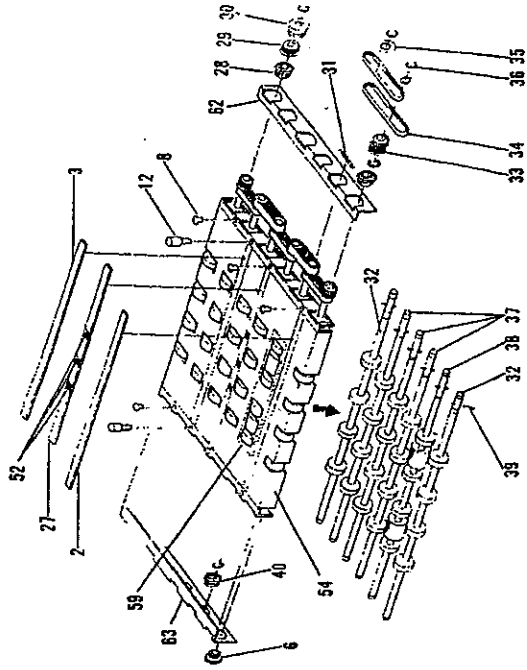
ITEM #	PART NO.	DESCRIPTION	TOSHIBA #	QTY
1		GUIDE, A-N34189*	4363559481	1
2	N51172	ZPAN30*06MSZNA	7640300651	2
3	N88890	SP-P, RJ	4363697900	2

DETECTOR UNIT

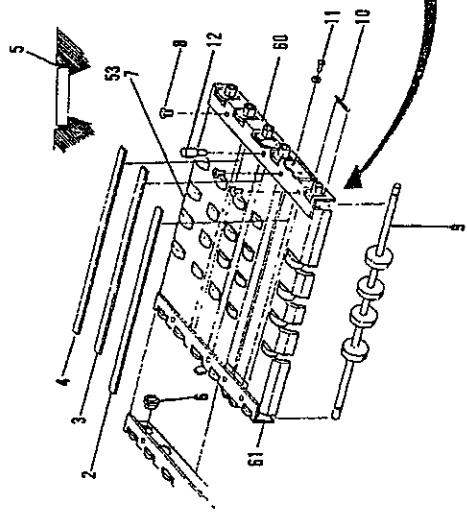
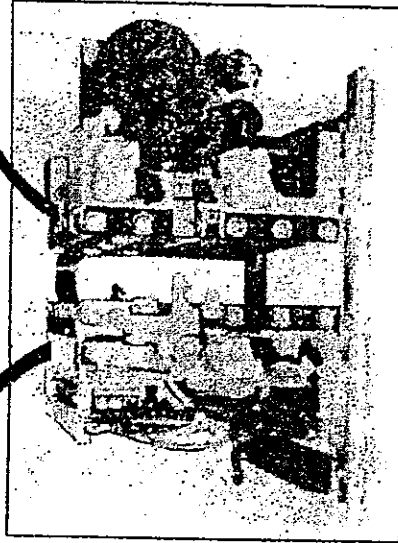


REF NO.	PART NUMBER	DESCRIPTION	QTY
1	N65471	Asb., Detector Unit - UFS	1
NOT RL	N91144	Asb., Detector Unit - UFS	
2	N65536	Cover, 5 x 2 1/2, Glass	2
3	N65535	Cover, 9 x 12, Glass	2
4	N65537	Lens, Opt., Upper, 3 x 200	1
5	N61968	Adhesive, Guide Plate	1
6	N86880	Bushing	17
7	N65541	Guide, S, Upper	1
8	N51171	Guide, NS-5 x 14mm PHFL	6
9	N86819	Idly Asb., Feed	5
10	N86885	Spring	10
11	N51172	Screw, M3.5 x 6mm ZP-AN	8
12	N61969	Tool, Alignment	1
13	N65549	Cushion, HANSHA	2
14	N65547	Cushion, TOKA	2
15	N65555	Plate, TOKA-Upper	1
16	N90047	Sealant, ADH-TSE-399C	1
17	N65553	Guide, UFS	1
18	N65526	Socket, Asb., FL-Lamp #2	2
19	N65450	Lamp	1
20	N90256	Pipe, Lamp-Tube	3
21	N90258	Film, Lamp-Tube	3
22	N51153	Cap (C) - 6MCEFR	3
23	N86884	Spring	1
24	N51172	Screw, M3 - .5 x 6mm ZP-AN	2
25	N65551	Cushion, Ring	2
26	N65524	Socket, FL-Lamp	2
27	N65538	Lens, Opt-Lower 9 x 200	1
28	N86873	Bearing, 88ZZNR	2
29	N89038	Gear, 28mm x L4.8S	1
30	N86893	Pulley, V-3M	1
31	N89037	Spring, SPE-032-035-144	2
32	N86820	Roller, Drive-BRG	2
33	N86895	Gear, 28 M x L - 4.80	5
34	N86855	Belt, Cog	4
35	N90254	Spacer, Flange - KANSA	5
36	N51153	Cap, 6M C-EFR	4
37	N86819	Roller, Drive - Bush	20
38	N86821	Roller, Drive - M	1
39	N90255	Pin, 2 x 12mm	6
40	N90647	T-Bushing 8	2
41	N65548	Cushion, TOKA-Lower	1
42	N65554	Cushion, Ring	4
43	N65557	Plate, TOKA-Lower	1
44	N65525	Socket, Asb., FL-Lamp #1	1
45	N65546	Cushion, Sensor #3	2
46	N65547	Cover, Upper Sensor	1
47	N65543	Cushion, Lens #2	3
48	N65534	Lens, SLA	3
49	N65542	Cushion, Lens #1	3
50	N65552	Seal, TOKA	2
51	N65553	Seal, HANSHA	2
52	N90640	Glass, 9 x 10 x 2MM	3
53	N89040	Asb., RLR-Kile	3
54	N89042	Asb., RLR-Drive	3
55	N65558	Sensor, Image - CCD - UFS	3
NOT RL	N64713	Sensor, Image - CCD-UFS	
56	N89041	Asb., Magnetic Detector	3
57	N65455	Asb., Magnetic Head	2
58	N89036	Bearing, Roller - SCS - 16RMZZ	1
59	N89043	Plate, Guide - M - Asb.	2
60	N91146	Bracket, Kile - L	4
61	N91147	Bracket, Kile - R	4
62	N91148	Bracket, Drive - L	1
63	N91149	Bracket, Drive - R	1
64	N65463	Motor, SSK25A-AUL	1
65	N86854	Ball, PX-3M400	1

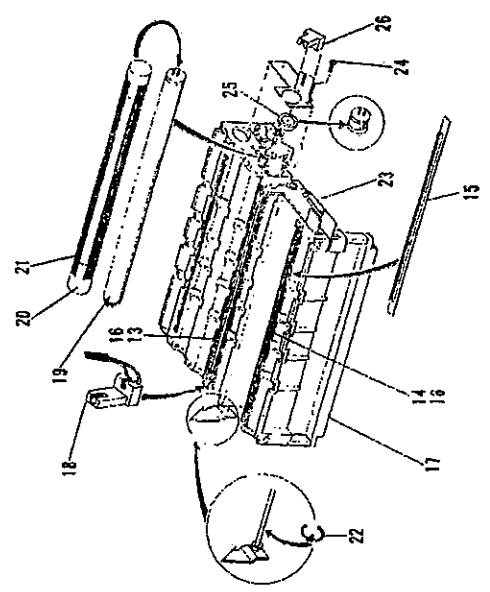
DETECTOR UNIT



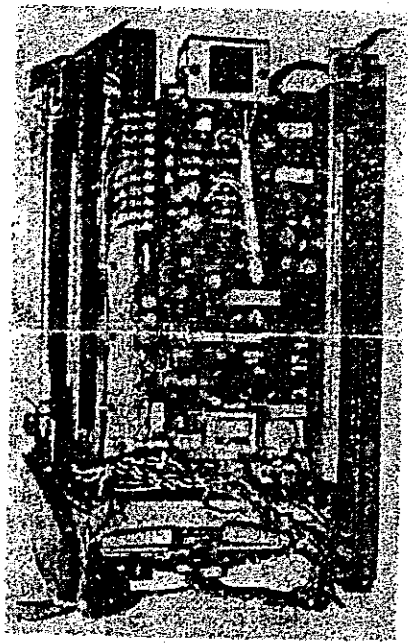
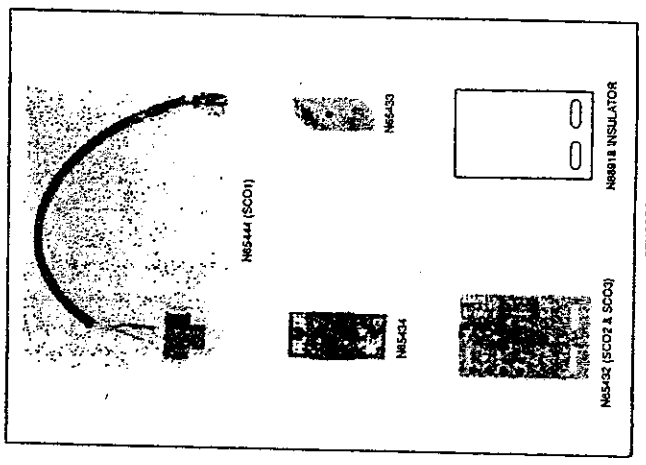
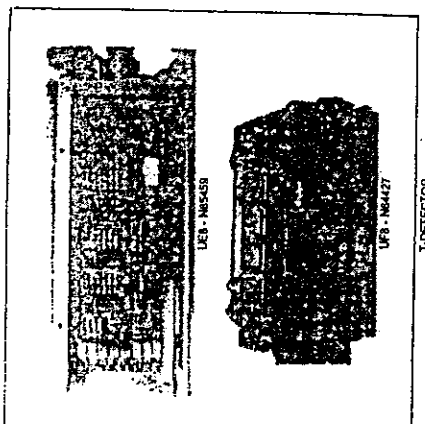
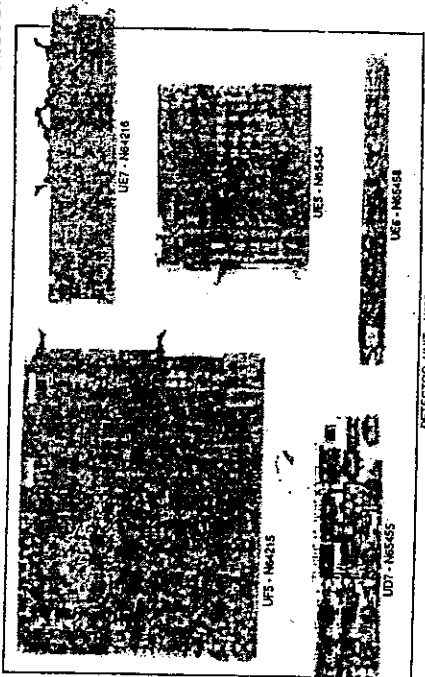
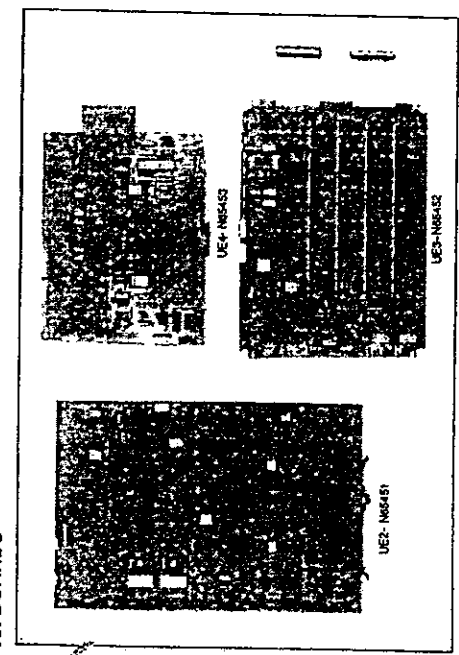
RLR - DRIVE ASSEMBLY



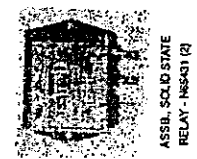
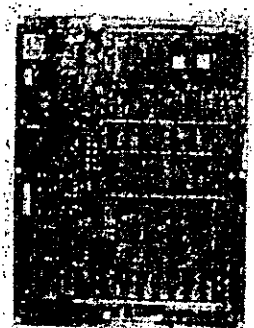
RLR - IDLE ASSEMBLY



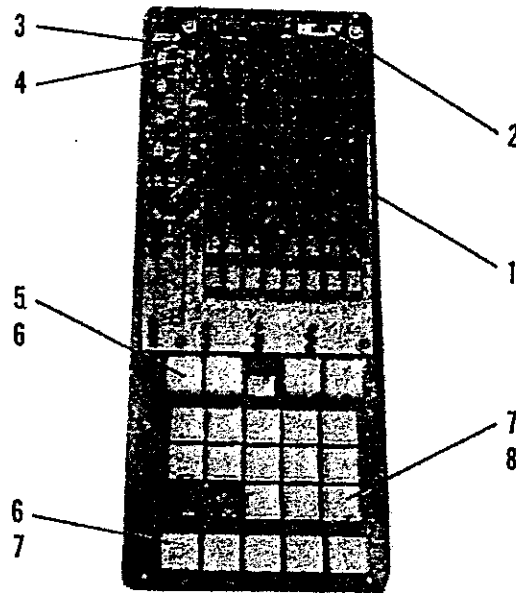
MAIN PROCESSOR P.C. BOARDS



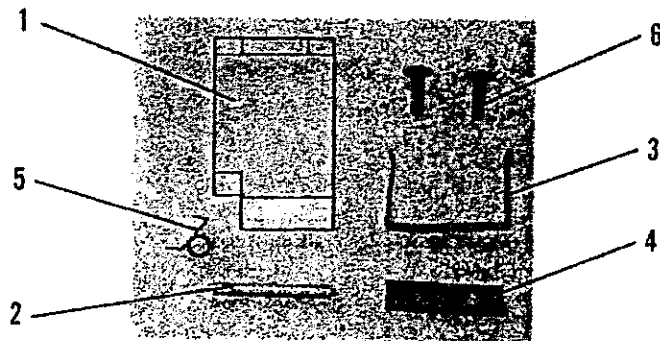
BLUZZER
NS642E
(NOT SHOWN)



OPERATOR KEYBOARD



ITEM#	PART NO	DESCRIPTION	TOSHIBA#	QTY
1	N65439	ASSEMBLY, KEYBOARD	4363769892	1
2	N65441	SWITCH, SLIDE	4843227619	1
3	N65448	LAMP, LED-RED	3038636490	11
4	N65447	LAMP, LED GREEN	3038606400	9
5	N65446	SWITCH, PUSHBUTTON (MODE)	4843230085	4
6	N88868	COVER, P.B. (MODE)	4363442230	9
7	N65445	SWITCH, PUSHBUTTON	4843230084	16
8	N88869	COVER, P.B.	4363543900	13
NOT SHOWN	N61956	PLATE, DISPLAY	4363540980	1
	N89834	HOOD, S OP PANEL (SEE ITEM 9, PG. 1)		



1	N89991	COVER, RETRY KEY	4363819530	1
2	N89992	PIN, COVER-RETRY	4363819540	1
3	N89993	BRACKET, COVER-RETRY	4363819550	1
4	N89994	PLATE, NUT-RETRY	4363819560	1
5	N89995	SPRING, COVER RETRY	4363819570	1
6	N89996	SCREW, B10S0*60MSZN3J	7043200611	2

EPROM/ROM LIST

EPROM/ROM PART NUMBERS

UE2

P/N	LEVEL(CF400)	BOARD LOC.	CPU	CKSM
N64429*	EBE 10	17D	D	1AF4
N64433*	DDF 11(UE5)	11G	DD	F9B1
N64517*	EDE 10(UF5)	11G	DD	F2B6
N64436*	DDF 21(UE5)	6H	DD	C900
N64679*	EDE 20(UF5)	6H	DD	BA00
N64437*	DDF 31(UE5)	6K	DD	CF00
N64680*	EDE 30(UF5)	6K	DD	D700
N64432	DME 13(UE8)	8D	DM	9B7D
N64431	DME 14(UF8)	8D	DM	6C2C
N64434	DDA 40	4F	DD	1EA7
N64435	DDA 50	2H	DD	1EA7
N64438	DKA 20	22M	DK	1BE0
N64439	DKB 12	18M	DK	AEFB

*NOTE: WHEN THESE I.C.'S ARE USED ON UE2, UE3
MUST HAVE EDE60(4F) AND EDEA0(13F).

UE3

P/N	LEVEL	BOARD LOC.	CPU	CKSM
N64445	EDE A0	13F	DD	7E07
N64446	EDE 60	4F	DD	0545
N64447	DDE 71	8F	DD	0094
N64448	DDK 80	7F	DD	000F
N64449	DDE 90	3F	DD	0079

UE4

P/N	LEVEL	BOARD LOC.	CPU	CKSM
N64450	DFB 17	6C	DF	2037
N64451	DFC 20	16C	DF	3C0A
N64452	DTC 50	6F	DF	28B0
N64453	DTC 50	7F	DF	28B0
N64454	BFC 30	9F	DF	27FF
N64455	BFC 30	10F	DF	27FF
N64456	BFC 30	13F	DF	27FF
N64457	BFC 30	14F	DF	27FF

EPROM/ROM LIST

UE5

P/N	LEVEL	BOARD LOC.	CKSM
N64440	DSA 40	1D	1588
N64441	DSA 50	3E	0660

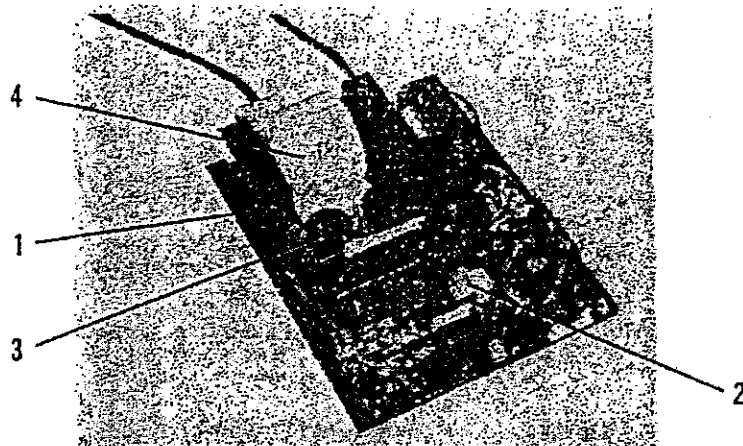
UF5

P/N	LEVEL	BOARD LOC.	CKSM
N64442	DSB 20	4F	C4F4
N64443	DSB 40	2D	1428
N64444	DSB 10	5E	04AF

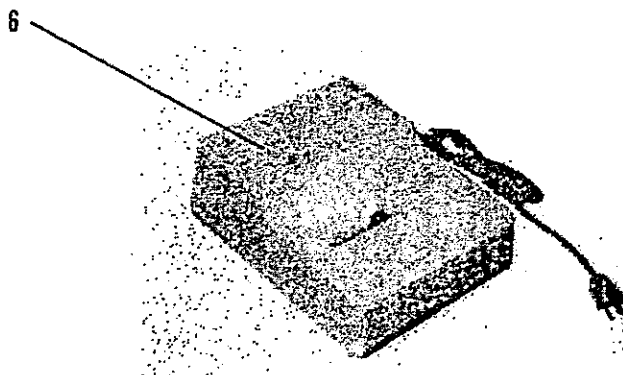
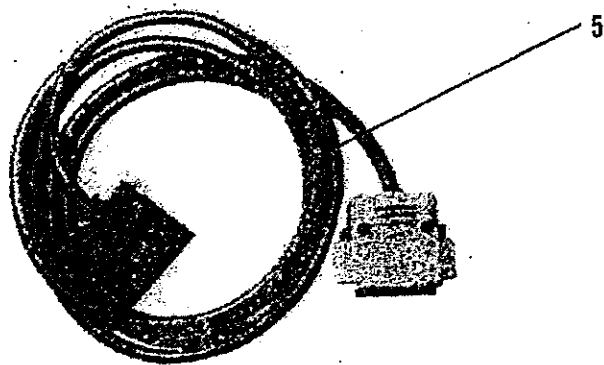
TMH

P/N	LEVEL	BOARD LOC.	CPU	CKSM
N64458	CFAF 01-5	10G	N	1F1A
N64459	CFAF 02-5	8G	N	C45C

PRINTERS



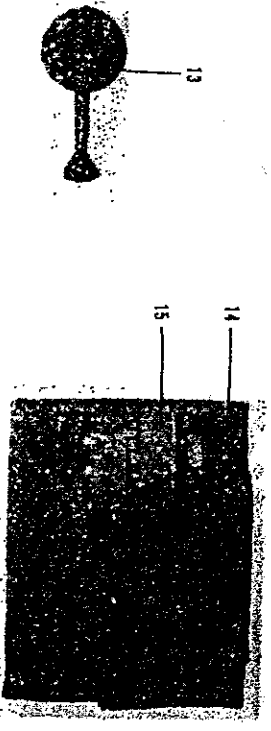
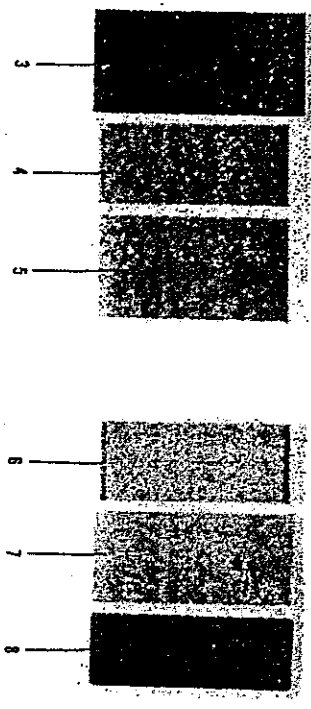
REF. NO.	PART NUMBER	DESCRIPTION	QTY.
1	N89838	Assb., Printer - Citizens 510	1
2	N64078	Head, Printer	1
3	N61958	Ribbon, Printer - Citizens	1
4	N61959	Paper, Roll Citizens	1
5	N64414	Cable, WRG-DC-DP-555-CF	1
6	N91145	Assb., Printer - Citizens CBM 530L	1



PART NUMBER	DESCRIPTION	DIMENSIONS (MM) BORE OUTER WIDTH	REMARKS
SPECIAL BEARINGS			
N89036	SS5-15 RMZZ	5 X 16 X 5	RUBBER ROLLER
N89051	SS6-22.5 RMZZ	6 X 22.5 X 5	RUBBER ROLLER
SHIELDED BEARINGS			
N88879	FC-6	6 X 10 X 12	LINEAR
N88147	L88 ANY	8 X 15 X 17	LINEAR
N89052	L88 NY	8 X 15 X 24	LINEAR
N88136	608 ZZ	8 X 22 X 7	
N89050	608 ZZNXRMC	8 X 24.8 X 7	CENTER FLANGE
N88875	F608 ZZ	8 X 25 X 7	FLANGED
N88137	6000 ZZ	10 X 26 X 8	
N88139	6200 ZZ	10 X 30 X 9	
SEALED BEARINGS			
N89045	623 LPS (R 1030 LL)	3 X 10 X 4	
N89046	R-1140 LL	4 X 11 X 4	
N89049	RF-1140 LL	4 X 12.5 X 4	FLANGED
N89047	605 LLS (R 1460 LL)	5 X 14 X 5	
N88876	L-1260 LL	6 X 12 X 4	
N88877	LF-1360 LL	6 X 15 X 5	FLANGED
N89048	SSR-1560 LL	6 X 15 X 5	
N88878	MF-117 LPS (L 1170 LL)	7 X 12.2 X 3	FLANGED
N91162	L88 NY UU	8 X 16 X 24	LINEAR
N88142	SSL-1680 LL (688 LL)	8 X 16 X 5	
N88145	LF-1680 LL (688 LLNF)	8 X 18 X 5	FLANGED
N91159	608 LL	8 X 22 X 7	
N91160	F608 LL	8 X 25 X 7	FLANGED
BUSHINGS			
N88881	BUSHING-D4	4 X 9 X 5	NYLON W/FLANGE
N88883	BUSHING-DU	6 X 8 X 6	
N89053	MB 0508 DU	8 X 10 X 8	
N90647	T-BUSHING-8	8 X 13 X 8	3 FLATS ON FLANGE
N88880	BUSHING-8	8 X 14 X 8	2 FLATS ON FLANGE
N88882	BUSHING-DB	8 X 16 X 8	
ADHESIVE			
N51263	LOCTITE, RC/609		

MISCELLANEOUS

PART NUMBER	DESCRIPTION
-------------	-------------



2mm Screw:
N89396

3mm Screw:
N51172
N51142
N90480
N51155
N51171
N50471

4mm Screw:
N90482
N51148
N90441
N51149
N51150
N51145
N51159

Pin:
N89907
N89039
N90235

Other:
N51153
N51151
N51152
N90479
N51154
N51140
N51202
N89904
N89905
N89906

KEY
ZPAN = Philips w/Fat & Lock Washers
PH = Philips
PAN = Fan Head
FL = Fathead

REF. NO.	PART NUMBER	DESCRIPTION
----------	-------------	-------------

1	N81830	CA Brush, Cleaning
2	N51248	Nozzle, Tubular
3	N51141	Note, Test (Black) Det. Unit
4	N61970	Film, T-Det. Test
5	N61971	Pattern, M-Det. Test
6	N61972	Note, Test (Red Strip)
7	N61969	Paper, T70 Test
8	N89975	Card Separator, RED
9	N51137	Brush, Brite
10	N61831	Brush, Cleaning B (Tooth Brush Type)
11	N61855	Brush, 210
12	N61854	Brush, SR
13	N61853	Brush, Blow
14	N51007	Cloth, Spread
15	N61957	Cleaner, Picklean
	N84147	Fan, CT382-CF